

Be a responsible snorkeller

Before you go

Check the conditions: be aware of tides, water temperatures, currents and weather forecasts before you leave.

Take a friend: never snorkel alone and always tell people where you are going.

Know who to contact: find out where the nearest medical and/or coastguard facility is and note down who to contact in an emergency.

At the beach

Know your surroundings: check what the weather and tides are doing, and identify a landmark for reference.

Use the right equipment: only use good quality and well-fitting equipment – mask, snorkel and fins.

Wear the right protection: a wetsuit will keep you warm and protect you against jellyfish stings. If it's sunny, remember to cream up!

In the water

Follow the Snorkeller's Code:

Do not remove seaweed or animals from the rock or from their homes.

Take care not to kick sealife with fins or stand on delicate animals.

Observe animals where they live and don't take anything away with you.

WARNING:

Do not snorkel in rough weather
Do not touch jellyfish and other wildlife
Never snorkel alone

Emergency Services:

999

Stornoway Coastguard:

01851 702013

Medical Centres:

Gairloch: 01445 712229

Ullapool: 01854 612015

Lochinver: 01571 844755

North West Highlands Snorkel Trail

Wester Ross and Sutherland

E livingseas@scottishwildlifetrust.org.uk

W scottishwildlifetrust.org.uk/snorkeltrail

F facebook.com/LivingSeasScotland

TW [@ScottishSeas](https://twitter.com/ScottishSeas)



- | | | | |
|---|------------------|---|----------------------|
| 1 | Bay of Clachtoll | 6 | Gruinard Bay |
| 2 | Achmelvich Bay | 7 | Mellon Charles |
| 3 | Achnahaird Bay | 8 | Big Sands Carn Dearg |
| 4 | Tanera Mòr | 9 | An Dun |
| 5 | Camusnagaul | | |

This project is part of the Scottish Wildlife Trust's Living Seas programme and has been supported by the Esmée Fairbairn Foundation.



Scottish
Wildlife
Trust

scottishwildlifetrust.org.uk

Harbourside House 110 Commercial Street Edinburgh EH6 6NF
T 0131 312 7765 E enquiries@scottishwildlifetrust.org.uk

The Scottish Wildlife Trust is a company limited by guarantee, registered in Scotland (no. SC040247). It is also a Scottish registered charity (no SC005792). Cover Image © George Stoyile. Images courtesy of Scottish Natural Heritage and Marine Scotland. All map data © 2016 Google.

Dive in to Scotland's Living Seas!



Scottish
Wildlife
Trust

For further information, visit:

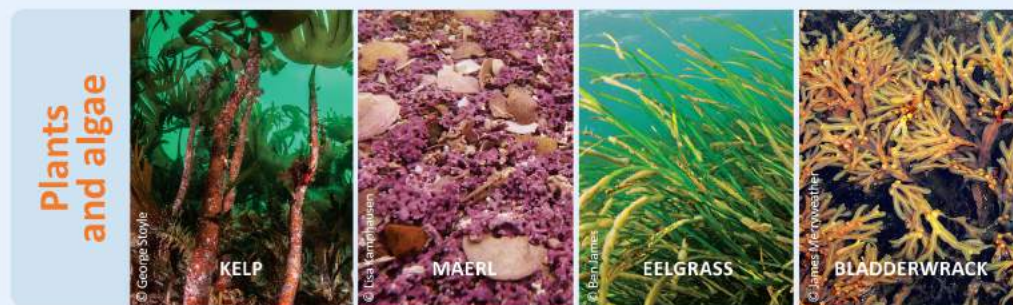
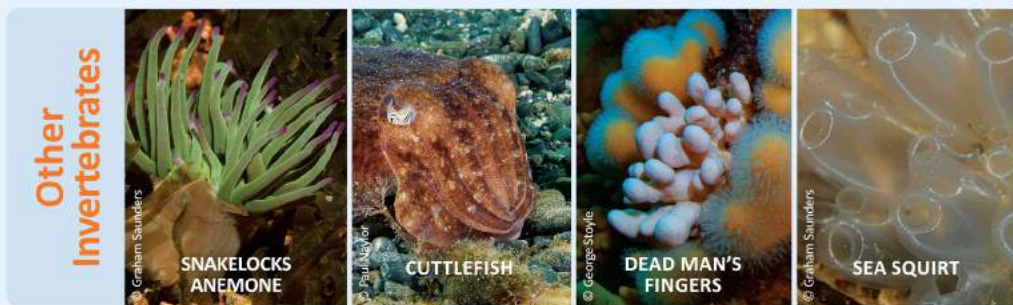
[scottishwildlifetrust.org.uk/
snorkeltrail](http://scottishwildlifetrust.org.uk/snorkeltrail)

Snorkel Trail

North West Highlands

Life under the waves

Scotland's north west coast is home to a rich and diverse array of marine habitats and species. There are no guarantees what you might see on your snorkel trail (that's part of the fun!), but here are some common species to keep an eye out for:



Also look out for...

HARBOUR PORPOISE	WHITE-TAILED EAGLE	BASKING SHARK
SEALS (COMMON AND GREY)	MINKE WHALE	MERMAID'S PURSE (SHARK OR RAY EGG CASE)

Remember the three Ts:
No touching, taking or teasing of marine animals, plants or shells.

What did you see on your snorkel?
Send us your pictures on **Facebook** and **Twitter!**



Bay of Clachtoll

MAP: OS Landranger 15, NC040270
NEAREST VILLAGE: Lochinver (6 miles)

P A beautiful beach with rocky outcrops and lots of marine life. The headlands provide the bay with some shelter so in calm conditions this can be a good spot for beginners. Watch out for seabirds and marine mammals from the beach and once in the water, look for juvenile fish and shellfish amongst the kelp.



Achmelvich Bay

MAP: OS Landranger 15, NC056249
NEAREST VILLAGE: Lochinver (4 miles)

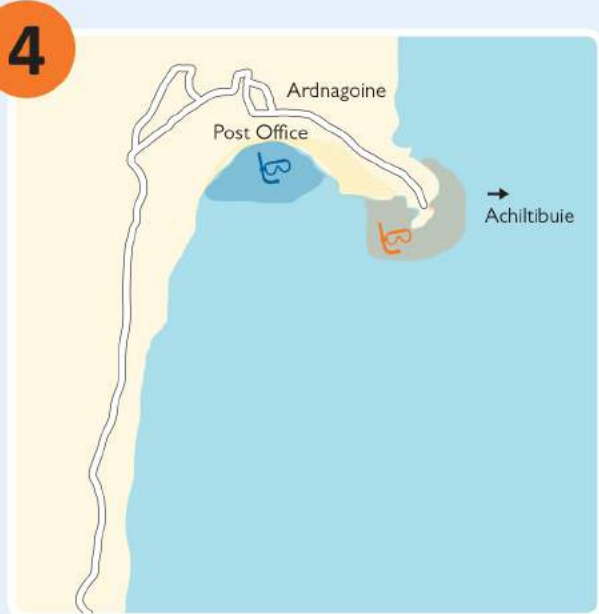
P A stunning sandy beach with rocky outcrops on both sides, providing lots of habitat to explore whilst snorkelling. A perfect beginner location, this site has plenty of fish, shellfish and kelp beds.
⚠️ The headland to the north leads to another, more secluded beach.



Achnahaird Bay

P **MAP:** OS Landranger 15, NC019139
NEAREST VILLAGE: Achiltibuie (4 miles)

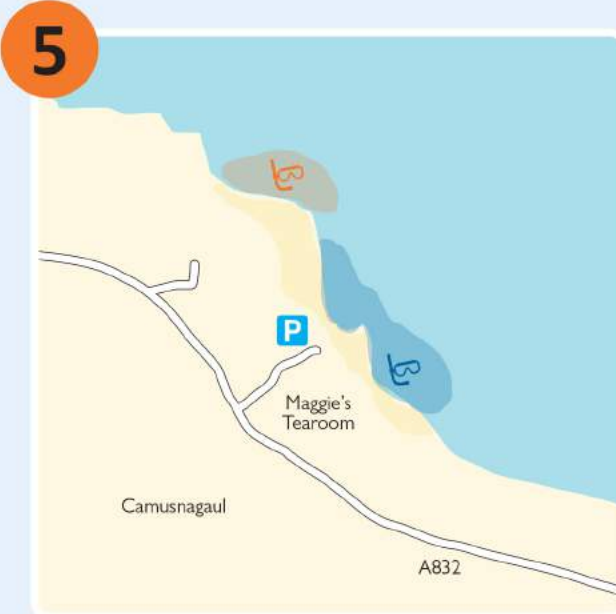
⚠️ A largely sheltered bay which is flanked by rocky outcrops. Underwater, kelp beds provide cover for juvenile fish such as pollock and coley. Be aware of tides as the gently sloping beach means that it recedes a long way which can lead to big walks in and/or back.



Tanera Mòr *(Only accessible by boat)*

⚠️ **MAP:** OS Landranger 15, NB995080
NEAREST VILLAGE: Achiltibuie (2 miles by boat)

⚠️ Tanera Mòr is the last inhabited island in the Summer Isles archipelago. The landing platform at Ardnaigoine is set on a headland with steep drop offs either side which make for some great snorkelling. Kelp and crevasses provide perfect hiding places for lobster, crabs and a wide variety of fish. Be careful not to block the landing platform whilst in the water.



Camusnagaul

⚠️ **MAP:** OS Landranger 19, NH067892
NEAREST VILLAGE: Camusnagaul (0 miles)

⚠️ A cleared shore leads out to a sandy bottomed area with rocky coastline to the west. Kelp and numerous rock pools provide perfect habitat for juvenile fish and crabs. Access is from the car park close to Maggie's Tea Room which provides toilet and café facilities.



Gruinard Bay

P **MAP:** OS Landranger 19, NG950905
NEAREST VILLAGE: Laide (4 miles)

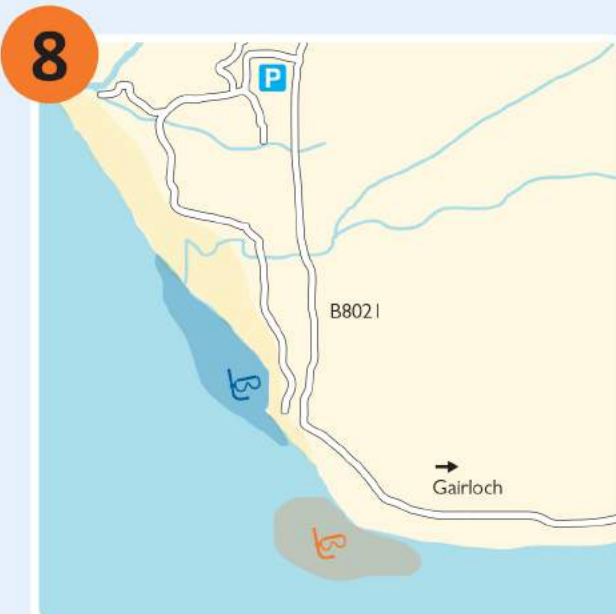
The headland at the north end of this picturesque beach offers great low tide exploration. Where the sand turns to rocky shore, seagrass and kelp provide shelter for numerous fish, shellfish and other marine life. Rare and fragile maerl can also be seen here. Be aware that the small northern headland becomes cut off at high tide.



Mellon Charles

P **MAP:** OS Landranger 19, NG845910
NEAREST VILLAGE: Mellon Charles (0 miles)

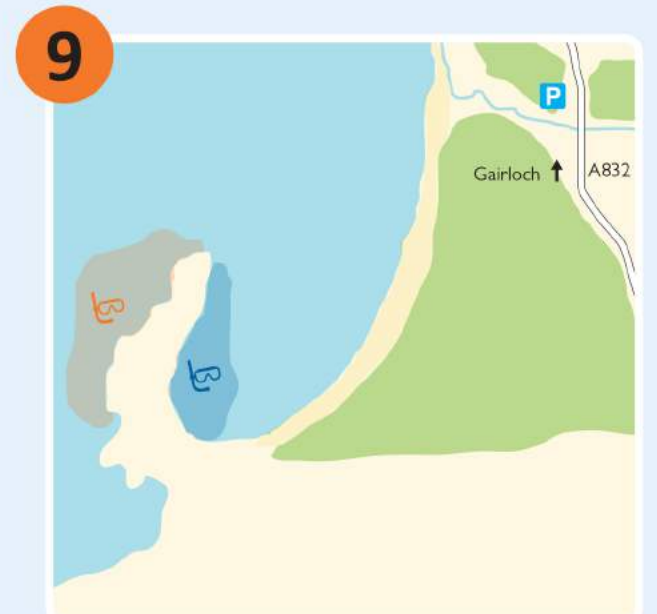
⚠️ A sheltered beach once owned and used by the Ministry of Defence. The old WW2 pier is a fantastic place to explore - urchins, anemones and wrasse can be seen beneath the waves and in the summer, look out for arctic terns. Kelp along the rocky shoreline also provides habitat for juvenile fish.



Big Sand Carn Dearg

P **MAP:** OS Landranger 19, NG760777
NEAREST VILLAGE: Gairloch (3 miles)

⚠️ The headland south of Big Sand has a nice sandy beach and is a great area for beginners. Further offshore, a reef with kelp forests, colourful rock dwellers and lots of fish is excellent for the more advanced snorkeller (100m swim required at low tide). Best explored when seas are calm.



An Dun

P **MAP:** OS Landranger 19, NG80375
NEAREST VILLAGE: Gairloch (1 mile)

⚠️ The An Dun headland offers a sheltered lagoon at low tide where juvenile fish and other small marine creatures congregate. The advanced trail on the outer side of the headland offers kelp forests, fish and shellfish (requires scramble over slippery boulders). The headland can be reached via a path from the Gairloch Golf Course car park.

Key

⬆️ Camping **P** Parking **♿** Toilets **🛒** Shop **⚠️** Single Track Access **☕** Café

👤 Beginner **👤** Advanced