

# Join us today!

You can help to support our vital work protecting Scotland's wildlife.

- Free entry to all our Visitor Centres and reserves
- Subscription to our Scottish Wildlife magazine
- Invitation to exclusive talks and events
- Membership starting from just £2.50 per month

Visit [www.scottishwildlifetrust.org.uk](http://www.scottishwildlifetrust.org.uk) for more information or call 0131 312 7765.

## You might also like to visit ...



### Possil Marsh Wildlife Reserve

Possil Marsh, a shallow loch fringed with various habitats, is an important staging post during spring and autumn for wildfowl and warblers. Roe deer are often seen, particularly during winter.

A Glasgow G23 5LB T 0131 312 7765  
E [enquiries@swt.org.uk](mailto:enquiries@swt.org.uk)



### Loch Libo Wildlife Reserve

Loch Libo has a range of habitats from open water to reed-swamp, floating bog, willow scrub and mature deciduous woodland. The reserve is a haven for mammals and birds such as teal, wigeon, warblers and buzzards.

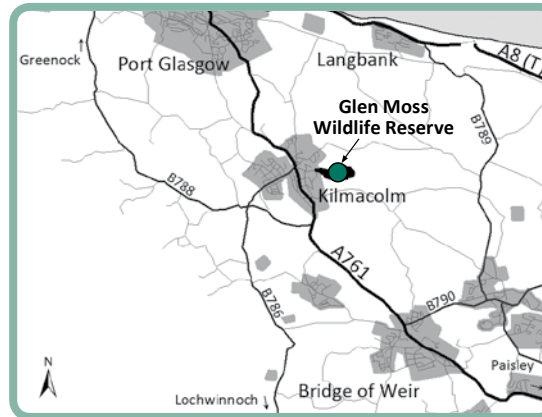
A Uplawmoor G78 4AF T 0131 312 7765  
E [enquiries@swt.org.uk](mailto:enquiries@swt.org.uk)

For information on places to see near you, visit our website:

[www.scottishwildlifetrust.org.uk/visit](http://www.scottishwildlifetrust.org.uk/visit)

## Glen Moss Wildlife Reserve

Off Glenmosston Road Kilmacolm Glasgow  
T 0131 312 7765 E [enquiries@swt.org.uk](mailto:enquiries@swt.org.uk)



Contains Ordnance Survey data © Crown copyright and database right 2012

### On foot:

From Kilmacolm centre, cross Bridge of Weir Road into Moss Road, right into Gillburn Road and right into Gowkhouse Road. Proceed up the hill on Gowkhouse Lane to meet Glenmosston Road at the top where the reserve is located (Grid ref. NS363698).

### By car:

Take the A761 from Paisley to Kilmacolm Cross. Turn left into St James Terrace and left again into the public car park.

### By public transport:

McGill's City Connect Route X7 operates every 30 minutes between Glasgow Buchanan Bus Station and Greenock, calling at Kilmacolm. From the village, follow the directions above.

## Support for Glen Moss



THIS PROJECT WAS PART-FINANCED BY THE SCOTTISH GOVERNMENT AND THE EUROPEAN COMMUNITY RENFREWSHIRE LEADER 2007-2013 PROGRAMME



The European Agricultural Fund for Rural Development  
Europe Investing in rural areas



[www.scottishwildlifetrust.org.uk](http://www.scottishwildlifetrust.org.uk)

Harbourside House 110 Commercial Street Edinburgh EH6 6NF  
T 0131 312 7765 F 0131 312 8705 E [enquiries@swt.org.uk](mailto:enquiries@swt.org.uk)

The Scottish Wildlife Trust is a company limited by guarantee, registered in Scotland (no. SC040247). It is also a Scottish registered charity (no SC005792). Cover image of male black darter © T Norman Tait. Inside images of various dragonflies © T Norman Tait. Female roe deer © Darin Smith. Kestrel © Steve Gardner. Leaflet is printed on FSC accredited stock.

# Take time to unwind



# Glen Moss Wildlife Reserve

# Glen Moss

Wildlife Reserve

## Visitor information



**SCENIC WALK** with few slopes and steps. Follow the moss edge and go around the heathland.



**THE VIEWPOINTS** look across the marshland and water that make up the western half of the reserve.



**DRAGONFLIES** can be seen hunting, mating and egg-laying beside the pond in this section of the reserve.



**COLOURFUL TREES** provide wildlife and visitors shelter from the wind, as well as adding texture to the landscape.



**CURLING** took place on the moss in the early 20th Century, with water levels being controlled by the (now disused) sluice.

# Take time to unwind

ENJOY dragonfly-spotting in the tranquil surroundings of Glen Moss Wildlife Reserve

Dragonflies rest with their wings open flat, damselflies with them touching. With their eyes, it is the other way round – dragonflies' touch in the middle, damselflies' are apart. The five damselfly species breeding at Glen Moss are azure, blue-tailed, common blue, emerald and large red.



## Black darter



Small, restless dragonfly with black legs. Female's (pictured) abdomens are yellow; male's (cover) are black and narrow in the middle.

## Common darter



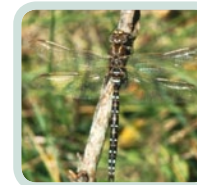
A small red or brown dragonfly with a yellow stripe on its legs. It often perches on the ground in cool conditions, making it easy to photograph.

## Four-spotted chaser



Chunky with a dark rear end. Named for the marks on the leading edge of each wing; wings often brown where they join the body.

## Common hawker



Large, fast-flying dragonfly that rarely rests, making positive ID frustrating! Males are blue/black, females yellow/brown.

