

Annexes

To the Report to the Scottish Wildlife Trust and the IUCN UK Peatland Programme. *Restoration of lowland raised bogs in Scotland: Emissions savings and the implications of a changing climate on lowland raised bog condition.*

Artz, Donnelly, Cuthbert, Evans, Smart, Reed, Kenter & Clark

2012

Annex Table 1. Name and location of the 137 raised bogs in the LRBI larger than 50 ha. Sites that have also been surveyed by SWT as part of their Lowland Raised Bog survey that are > 50 ha are shown in bold (Matthews, 2012). Sites with designated status are in italics.

Location (NGR)	Site Name	Area (ha)	Designated site status	Current condition*	On Basin peat?	Comments
NY005755	Craigs Moss	1,122	No designation but linked to Solway Mosses North		No	Soil type is a compound of forest soils and peats, includes pockets of basin peat of 3 m depth
NY044705	<i>Longbridge Muir</i>	1,056	Part of Solway Mosses North SAC	FM for active, UR for degraded	Yes	1146 ha in SWT data (also called Lochar Moss)
NS636985	<i>Flanders Moss East</i>	739	Part of Flanders Mosses SAC and component SSSI, NNR	UD for active; UR for degraded	Yes	774.9 ha in SWT data
NK031542	St Fergus Moss	726	No designation?		Yes	210 ha in SWT data
NR821926	<i>Moine Mhor</i>	626	SAC and component SSSI, NNR	UR for both features	Yes	
NY032727	Racks Moss	504	No designation?		Yes	
NX439596	Moss of Cree	474	No designation?		Yes	
NS568960	<i>Flanders Moss West</i>	411	Partly within Flanders Mosses SAC and component SSSI, NNR		Yes	
NK040514	<i>Rora Moss</i>	378	SSSI	UD	Yes	
NS973479	<i>Carnwath Moss</i>	371	SSSI	UNC	Yes	
NY265685	Nutberry Moss	339	No designation?		Yes	
NJ752107	Skene Moss	294	No designation?		Yes	
NT168902	Moss Moran	262	No designation?		Yes	397 ha in SWT data
NX120547	Unnamed (nr. Wigtown, Dumfr &G)	259	No designation?		Yes	West of Luce Sands, East of Stranraer
NJ834565	Corthie Moss	240	No designation?		Yes (on edge)	
NS367456	Bloak Moss	239	No designation?		Yes	
NK002547	Kininmonth Moss	232	No designation?		Yes	
NT201533	<i>Whim Bog</i>	224	SSSI	UR	No	Compounds of peaty gleys and peat, blanket peat pockets of 1 m depth

Location (NGR)	Site Name	Area (ha)	Designated site status	Current condition*	On Basin peat?	Comments
NM917357	Moss of Achnacree	220	No designation?		Yes	338 ha in SWT data
NS352473	Auchentiber Moss	209	No designation?		Yes	
NO180014	Portmoak Moss	198	No designation?		Yes	
NY115662	Priestside Flow	195	No designation?		Yes	Priestside Flow in the SWT (228 ha) is in a different location further east (called Merkland Moss, 107 ha) in the LRBI. The SWT marker for Priestside Flow does not have an LRBI entry
NT628421	<i>Gordon Moss (part 1)</i>	185	Wet woodland SSSI	No records	No	Compounds of brown forest soils and peat, basin peat pockets 3 m depth
NS880862	Letham Moss	176	No designation?		Yes	167 ha in SWT data
NS957483	Ryeflat Moss	175	No designation?		Yes	
NS548955	Garchell Moss	175	No designation?		Yes	
NX972698	<i>Kirkconnell Flow</i>	168	SSSI/NNR	UR	Yes	
NS343353	Shewalton Moss	166	No designation?		Yes	
NT636425	<i>Gordon Moss (part 2)</i>	164	Wet woodland SSSI	No records	No	Part 2 was not designated at time of LRBI, see above for soil classification
NX800503	Rascarrel Moss	163	No designation?		Yes	
NR675223	Aros Moss	162	No designation?		Yes	
NS826362	<i>Coalburn Moss</i>	154	SAC/SSSI	Active part FM- degraded part UR	Yes	
NW990641	Garchie Moss	153	No designation?		No	Compounds of peat with peaty rankers, semi-confined peat pockets of 1.5 m depth
NX850615	Barclosh Moss Complex	147	No designation?		Yes	
NS840610	Unnamed, NS86.26 (nr Motherwell)	144	?		Yes	NW of Shotts

Location (NGR)	Site Name	Area (ha)	Designated site status	Current condition*	On Basin peat?	Comments
NO010235	<i>Methven Moss</i>	142	SAC/SSSI	Active part FM- degraded part UR	Yes	
NS560976	Gartrenich Moss	142	No designation?		Yes	
NS942551	Unnamed, NS95.19 (South Lanarkshire)	141	?		No	N of Forth; Compounds of non-calcareous gleys with some peaty pockets
NS662491	Cladence Moss	141	No designation?		Yes	
NS810649	<i>Lady Bells Moss</i>	135	SSSI	UR	Yes	
NS885681	<i>Blawhorn Moss</i>	131	SAC/SSSI/NNR	Both parts UR	No	Compounds of peaty gleys with blanket peat pockets of 1 m depth
NO860942	<i>Red Moss of Netherley</i>	130	SAC/SSSI	Both parts UNC	Yes	
NT518424	<i>Threepwood Moss</i>	127	SAC/SSSI	Active part UR- degraded UNC	Yes	
NS843641	Unnamed, NS86.49 (nr Monklands, Lanarkshire)	127	?		No	Compounds of brown forest soil with peaty pockets
NX951725	Drungans Moss	126	No designation?		Yes	
NS678672	Gartloch	124	No designation?		No	Compounds of brown forest soil with peaty pockets
NS439661	Linwood Moss	123	No designation?		Yes	
NM906397	Unnamed (Argyll and Bute)	122	?		Yes	NW of Benderloch
NT228567	Springfield Moss	122	No designation?		Yes	
NS572991	Cardross Moss	121	No designation?		Yes	
NS855692	<i>Black Loch Bog</i>	119	SAC/SSSI	Both parts UNC	No	Black Loch Moss on Sitelink? Unsure if this is the same site, not designated in LRBI report. Peaty gleys with blanket bog pockets of 1 m depth.

Location (NGR)	Site Name	Area (ha)	Designated site status	Current condition*	On Basin peat?	Comments
NX378458	Drumscallan Moss	119	No designation?		Yes	
NR828952	Crinan Moss	117	No designation?		Yes	
NT684498	<i>Dogden Moss</i>	116	SAC	Active - FM	Yes	
NS612998	Unnamed (Stirling)	114	?		Yes	Part of Flanders Moss East in terms of soil type
NX394439	Auchness Moss	113	No designation?		Yes	
NX408449	Grennan Moss	111	No designation?		Yes	
NJ602570	<i>Reidside Moss</i>	109	SAC/SSSI	Both parts UR	Yes	
NX408427	Ravenstone Moss	108	No designation?		Yes	
NS667511	Crutherland Moss	107	No designation?		No	Compounds of brown forest soil with peaty pockets
NX880718	Merkland Moss	107	No designation?		Yes	Called Priestside Flow in SWT data (228 ha)
NS742967	<i>Ochertyre Moss</i>	106	SSSI	UNC	Yes	
NJ745009	Red Moss	104	No designation?		Yes	Red Moss of Candyglirach, near Banchory
NJ853579	Greens of Auchmedden	101	No designation?		Yes	
NJ703175	Red Moss	101	No designation?		Yes	Near Kemnay
NK069424	Moss Gray	100	No designation?		No	Peaty podzols with peat pockets
NS685507	<i>Waukenwae Moss (part 1)</i>	100	SAC/SSSI	Active FR- degraded UR	No	Not designated in LRBI report, compound with adjacent site of same name (see below), Both on compound soils of mostly brown forest soils
NJ275646	Moss of Meft	100	No designation?		No	Compounds of non-calcareous gleys with peaty pockets
NJ917155	Red Moss	99	No designation?		Yes	Near Potterton, Aberdeen North

Location (NGR)	Site Name	Area (ha)	Designated site status	Current condition*	On Basin peat?	Comments
NS865893	Easter Moss	97	No designation?		Yes	
NS349349	Shewalton Moss	95	No designation?		Yes	
NK042335	Lochlundie Moss 1	90	No designation?		Yes	
NS435843	Unnamed (nr Dumbarton)	90	?			Called Graystonelee (125 ha) in SWT data? Compound soils of mostly non-calcareous gleys
NK041330	Lochlundie Moss 2	88	No designation?		Yes	As above for Lochlundie Moss 1
NH834537	Blar nam Fiadh	88	No designation?		Yes	62.4 ha in SWT data
NY025764	Redhills Moss	88	No designation but may be linked to Solway Mosses Complex		No	156 ha in SWT. Not on pure basin peat but part of larger area of basin peats and compound soils surrounding Solway Mosses North SAC which includes Longbridge Muir and Kirkconnell Flow. Larger complex of old basin peat deposits may include Craigs Moss (1122 ha), Racks Moss (504 ha), Longbridge Muir (1056 ha) and Kelwood Moor (71 ha)
NY274729	Gillshaw Flow	87	No designation?		Yes	
NS829619	Unnamed, NS86.46 (nr Monklands, Lanarkshire)	87	?		Yes	Same soil polygon as NS86.28, N of Shotts
NJ815236	Burreldale Moss	85	No designation?		(Yes)	Close by a 30 ha basin peat polygon
NJ527575	Whitley Moss	83	No designation?		Yes	
NS933478	<i>Cranley Moss</i>	83	SAC/SSSI	Active part FM- degraded UR	Yes	

Location (NGR)	Site Name	Area (ha)	Designated site status	Current condition*	On Basin peat?	Comments
NS803362	Unnamed NS83.7 (South Lanarkshire)	82	?		Yes	
NS798730	Unnamed (North Lanarkshire)	82	?		No	E of Cumbernauld, S of Fannyside Muir. Compound soils of mostly non-calcareous gleys with peat pockets
NS537957	<i>Offerance Moss</i>	81	SSSI, part of Flanders Moss SAC	UR	(Yes)	Slightly off a basin peat polygon
NS427685	Barochan Moss	80	No designation?		Yes	
NS923481	Blacklaw Moss	79	No designation?		Yes	
NY295718	<i>Raeburn Flow</i>	78	SAC/SSSI	Active part FM, degraded UR	Yes	77.6 ha in SWT data
NH925499	Fornightly Moss	77	No designation?		Yes	
NS546975	Arnochoile Wood Moss	76	No designation?		Yes	
NX428589	<i>Carsegowan Moss</i>	76	SAC/SSSI	Both parts UNC	Yes	
NS837202	Crawick Moss	75	No designation?		No	Blanket peat polygon of 0.75 m depth
NJ573524	<i>Moss of Crombie 1</i>	74	SSSI, but as intermediate (blanket) bog	Intermediate (blanket) bog in Sitelink (UD)	Yes	155 ha in SWT data, part of a compound raised bog with Moss of Crombie (2)
NT232545	Unnamed (Borders)	74	?		No	S of Springfield Moss, brown forest soils
NJ041569	Unnamed (nr Forres)	73	?		No	Alluvial soils (= estuarine raised bog?)
NS446685	Fulwood Moss	73	No designation?		No	Built up soil polygon
NY081880	Redhalls Moss	71	No designation?		Yes	
NS871385	Unnamed, NS83.4 (South Lanarkshire)	71	?		No	Blanket peat of 3 m depth, Stated on OS map as old peat workings near open cast mining at Broken Cross Muir

Location (NGR)	Site Name	Area (ha)	Designated site status	Current condition*	On Basin peat?	Comments
NJ912179	Red Moss	71	No designation?		Yes	Near Whitecairns, Aberdeen North
NY010703	Kelwood Moor	71	No designation?		Yes	
NS878883	Dunmore Moss	70	No designation?		Yes	
NS588966	<i>Collymoon Moss</i>	70	SSSI, part of Flanders Moss SAC	UD	Yes	
NH949569	Inshoch Moss	67	No designation?		Yes	
NJ541517	Rowan Bauds	66	No designation?		Yes	See above. 85.3 ha in SWT data.
NT140498	White Moss	66	No designation?		Yes	92.9 ha in SWT data
NS869644	Unnamed, NS86.64 (nr Monklands, Lanarkshire)	65	?		Yes	N of Shotts, S of Forrestburn Reservoir
NX406488	Airies Moss	64	No designation?		Yes	
NJ620538	Auchintoul Moss	63	No designation?		Yes	94.3 ha in SWT data
NS357489	<i>Cockinhead Moss</i>	63	SAC/SSSI	Active UNC, degraded UD	Yes	
NS696662	Commonhead Moss	62	LNR		Yes	
NS770680	Drumshangie Moss	62	No designation?		No	Compound of brown forest soils with peat pockets
NS989554	Unnamed, NS95.13 (South Lanarkshire)	61	?		No	Compound of non-calcareous gleys with peat pockets
NJ569511	<i>Moss of Crombie (2)</i>	61	SSSI, but as intermediate (blanket) bog	Intermediate (blanket) bog in Sitelink (UD)	Yes	Part 2 not designated in LRBI report
NS707660	Unnamed, NS76.5 (nr Monklands, Lanarks.)	60	?		No	Compound of brown forest soils with peat pockets
NX075471	Ringuinea Moss	59	No designation?		Yes	
NS663526	<i>Blantyre Muir</i>	58	SSSI	UD	No	
NO306041	Star Moss	58	Not classed as a raised bog SSSI (mixed birch woodland, wetland)	N/A		Mentioned as designated in LRBI report, Compound of brown forest soils with peat pockets

Location (NGR)	Site Name	Area (ha)	Designated site status	Current condition*	On Basin peat?	Comments
NS647962	<i>Shirgarton Moss</i>	58	SSSI, part of Flanders Moss SAC	UNC	Yes	
NJ915587	Auchmaclieddie	57	No designation?		Yes	
NN860091	<i>Shelforkie Moss</i>	57	SAC	Both parts UNC	Yes	
NM914365	Unnamed (Argyll and Bute)	56	?		Yes	Same soil polygon as Moss of Achnacree
NS659672	Cardowan Moss	56	LNR		No	Compound of brown forest soils with peat pockets
NS489184	<i>Barlosh Moss</i>	56	SSSI for raised bog and fen	UR for raised bog	No	Compound of brown forest soils with peat pockets
NS812548	Unnamed, NS85.5 (nr Motherwell)	56	?		Yes	Greenhead Moss in Soils Inventory and on OS map
NX092437	Drumbreddan Moss	55	No designation?		Yes	Logan Moss on OS map
NT069933	Din Moss	54	No designation?		Yes	Not the Din Moss and Hoselaw Loch site
NS910669	Unnamed, NS96.1 (nr Motherwell)	54	?		Yes	E of Blackridge, disused tip close to old opencast mines
NS925662	Unnamed, NS96.3 (nr Motherwell)	54	?		Yes	Same soil polygon as above
NH885473	Unnamed (S of Nairn)	54	?		No	Humus-iron podzols with peat pockets
NH775773	<i>Pitmaduthy Moss</i>	54	SAC/SSSI	UNC	Yes	Also important bog woodland SSSI and for flies
NJ553511	Moss of Rothiemay \$	53	No designation?		Yes	
NJ905601	Red Moss	52	No designation?		Yes	
NS678508	<i>Waukenwae Moss (part 2)</i>	52	SAC/SSSI	Active part FR, degraded UR	No	Not designated in LRBI report, 2 adjacent LRBI sites of same name form compound, Brown forest soils with gleying with peat pockets
NS466064	<i>Dalmellington Moss</i>	51	SSSI	UR	No	Alluvial soils (= estuarine raised bog?)

Location (NGR)	Site Name	Area (ha)	Designated site status	Current condition*	On Basin peat?	Comments
NS664374	Unnamed, NS63.16 (nr East Kilbride)	51	?		No	Peaty gleys with pockets of blanket peat of 1 m depth
NS919666	Unnamed, NS96.2 (nr Motherwell)	51	?		Yes	Same soil polygon as NS96.3
NH868476	Unnamed (S of Nairn)	51	?		No	Humus-iron podzols with peat pockets, SE of Cawdor Wood
NS684681	Garnkirk Moss	51	No designation?		No	142 ha in SWT data – may be part of a compound raised bog. Brown forest soils with peat pockets
NY284746	Branteth Flow	50	No designation?		Yes	50.1 ha in SWT data
NS878883	Dunmore Moss	70	No designation?		(Yes)	Close by basin peat polygon, 129.5 ha in SWT data
NY025764	Redhills Moss	88	No designation?		No	156.7 ha in SWT data, Brown forest soils with basin peat pockets of 3 m depth
NJ525510	Whitley Moss	N/A	Not in LRBI, no designation?		No	104 ha in SWT data, close to Rowan Bauds, Non-calcareous gleys with peaty gleys
NS975613	Nether Longford Moss	44	No designation?		No	58.9 ha in SWT data, Non-calcareous gleys with some peaty gleys
NT287550	Side Moss	44	No designation?		No	53.1 ha in SWT data, Non-calcareous gleys with some peaty gleys

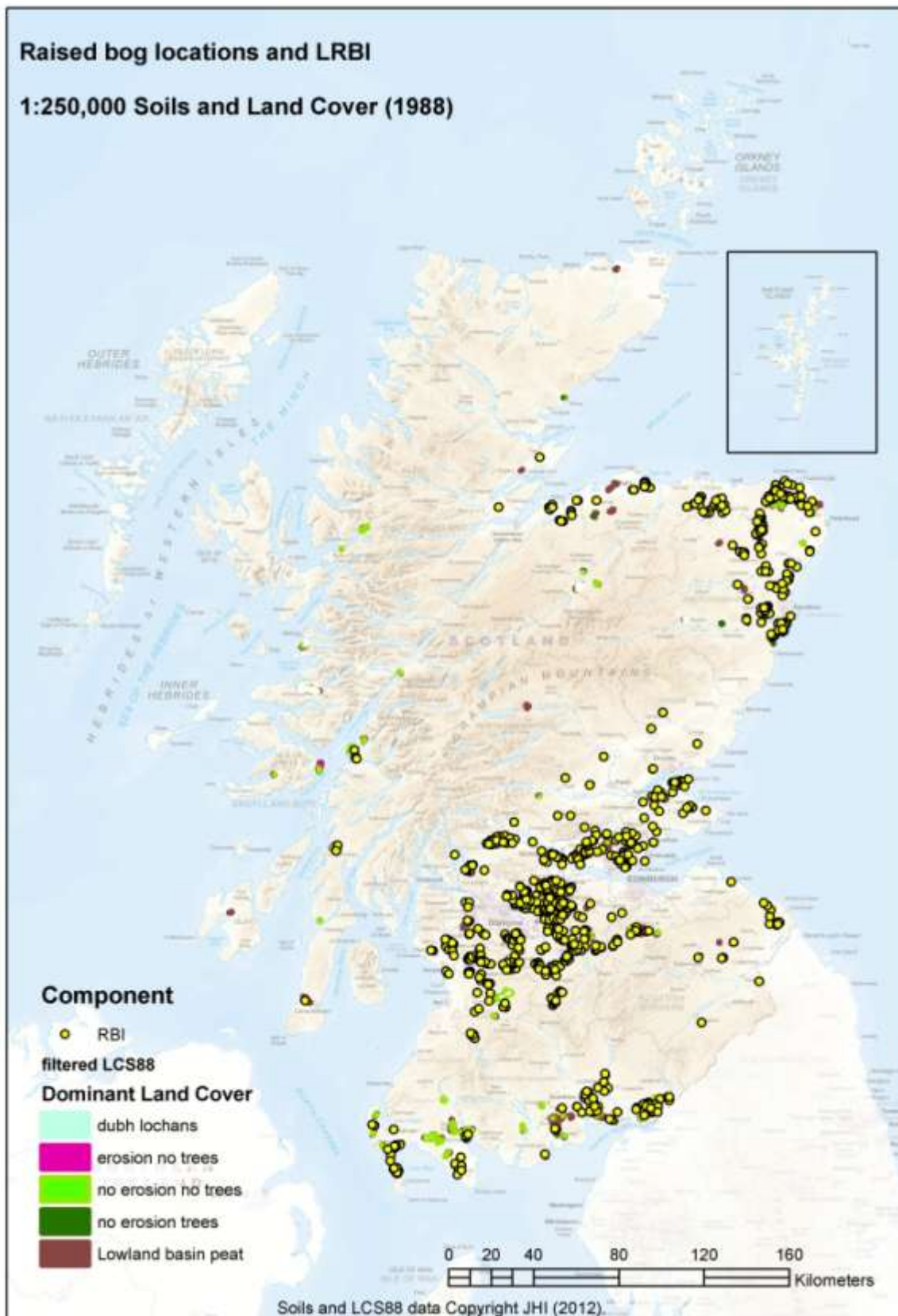
FM – Favourable Maintained, FR – Favourable Recovered; UD – Unfavourable Declining; UR – Unfavourable Recovering, UNC – Unfavourable No Change

Annex 2. Coding key for the 126 interpreted single features within the LCS88

<p>1 Isolated farmsteads and other buildings, with no trees 2 Isolated farmsteads and other buildings, with trees 3 Factories 4 Airfields 5 Golf courses 6 Cemeteries 7 Recreational land: wildlife parks, caravan sites, etc 10 - 11 Cliffs, bare rock, crags and screes 12 - 13 Quarries and opencast 14 - 15 Bings and refuse tips 16 Paths 17 Hill roads 18 - 19 Water 20, 29 Built-up land 21 - 22 Transport features: road, rail 24 Estuary, below the normal tidal limit 25 No photo cover 26 Cloud or shadow 27 Snow cover 28 Ski areas</p>	<p>70 -72 Coniferous woodland: plantation 73 -75 Coniferous woodland: semi-natural 76 -78 Undifferentiated broadleaved woodland (area) 79 -81 Undifferentiated mixed woodland (area) 82 Undifferentiated low scrub 83 Recently ploughed land for afforestation 84 Former woodland recently felled 85 Open canopy young plantation 86 Rhododendron scrub 87 Land recently "ripped" for afforestation</p>	<p>90 - 97 Improved pasture: with or without rock outcrops, clustered farmsteads, scattered trees 100- 107 Arable land: with or without rock outcrops, clustered farmsteads, scattered trees 110 - 117 Dry heather moor: with or without rock outcrops, burning, scattered trees 120 - 127 Wet heather moor: with or without rock outcrops, burning, scattered trees 130 - 137 Undifferentiated heather moor: with or without rock outcrops, burning, scattered trees 140 - 143 Undifferentiated coarse grasslands (Nardus/Molinia): with or without rock outcrops, scattered trees 150 - 153 Smooth grasslands with rushes: with or without rock outcrops, scattered trees 155 - 158 Smooth grasslands with low scrub: with or without rock outcrops, scattered trees 160 - 163 Undifferentiated smooth grasslands: with or without rock outcrops, scattered trees 170 - 173 Undifferentiated bracken: with or without rock outcrops, scattered trees 180 - 183 Blanket bog and other peatland vegetation: with or without erosion, scattered trees 184 Blanket bog and other peatland vegetation: dubh lochans 185 - 186 Blanket bog and other peatland vegetation: peat workings 190 Undifferentiated salt marshes: no scattered trees 191 Maritime grasslands and heaths: no scattered trees 200 - 203 Wetlands: with or without drains, scattered trees 210 - 213 Dunelands: bare dunes, partially stabilised dunes, links with grassland, links with heathland 222 Undifferentiated montane vegetation: with or without erosion, rock outcrops</p>
--	--	---

Annex 3.

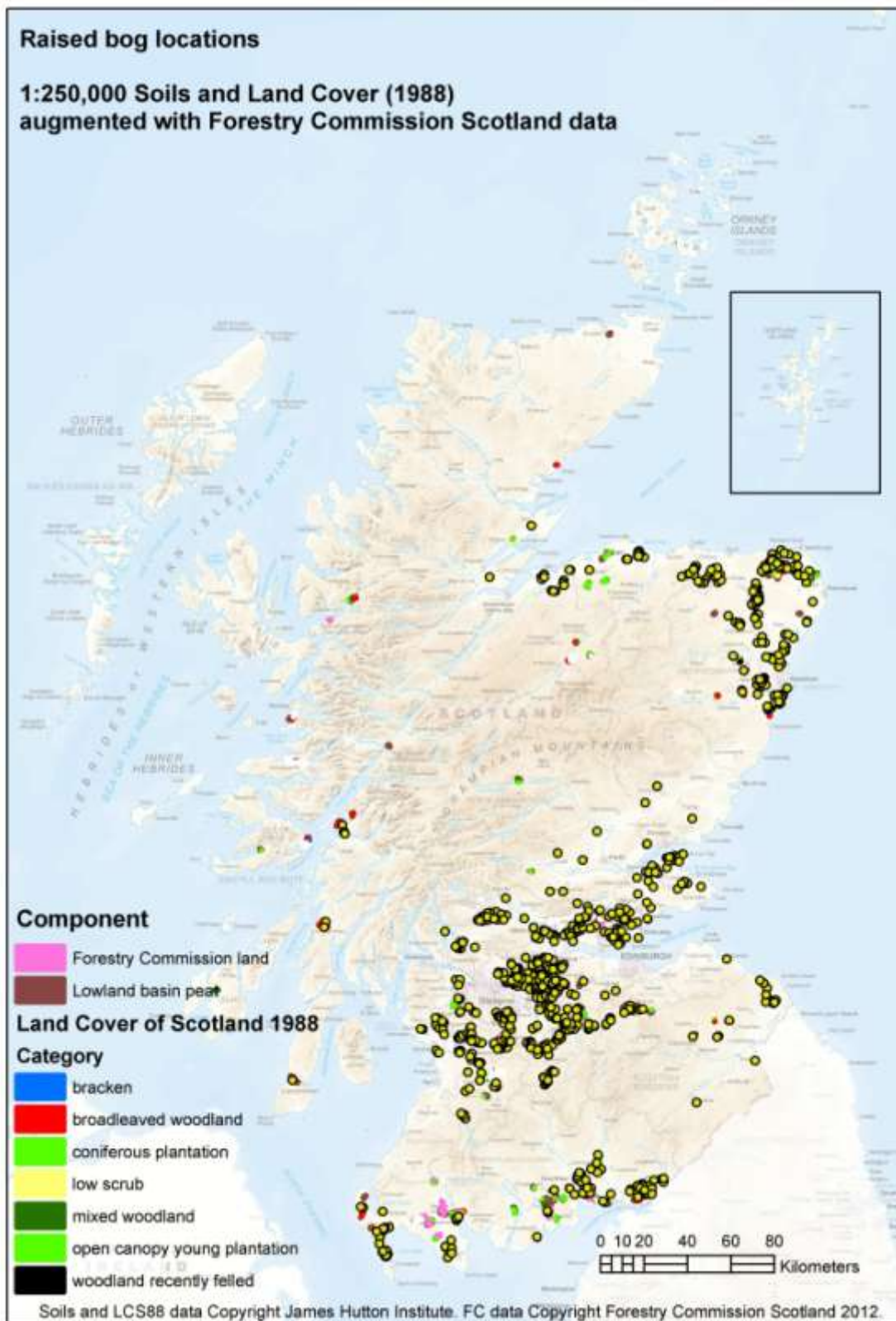
Additional maps



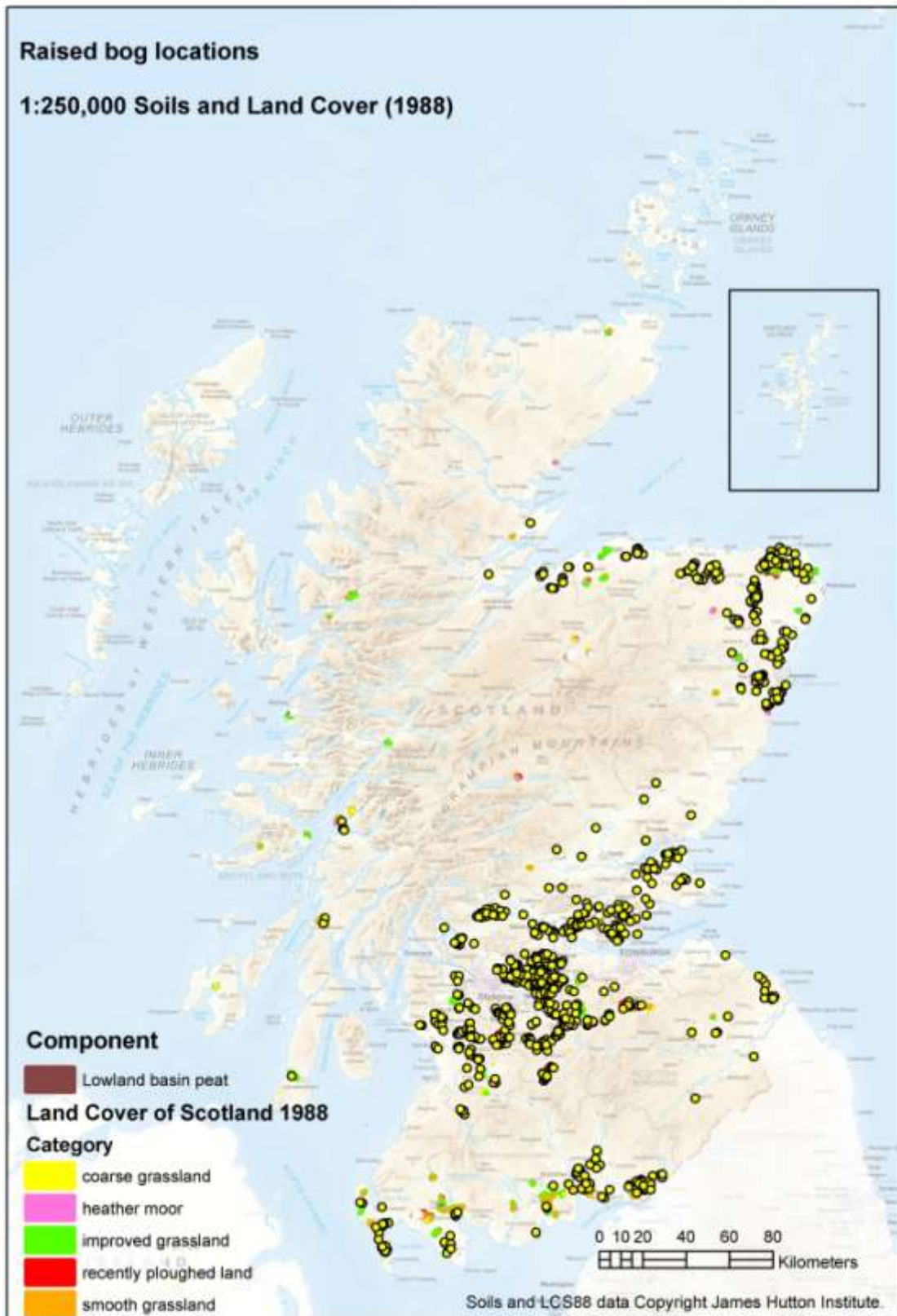
Annex Fig A1. Overlay of likely active bogs as per LCS88 with the LRBI locations, showing that some large complexes with potentially good quality vegetation cover were not included in the LRBI. Designated sites that are classified as blanket or intermediate (blanket) bog or for their upland assemblage habitat qualities have been masked (see main report).



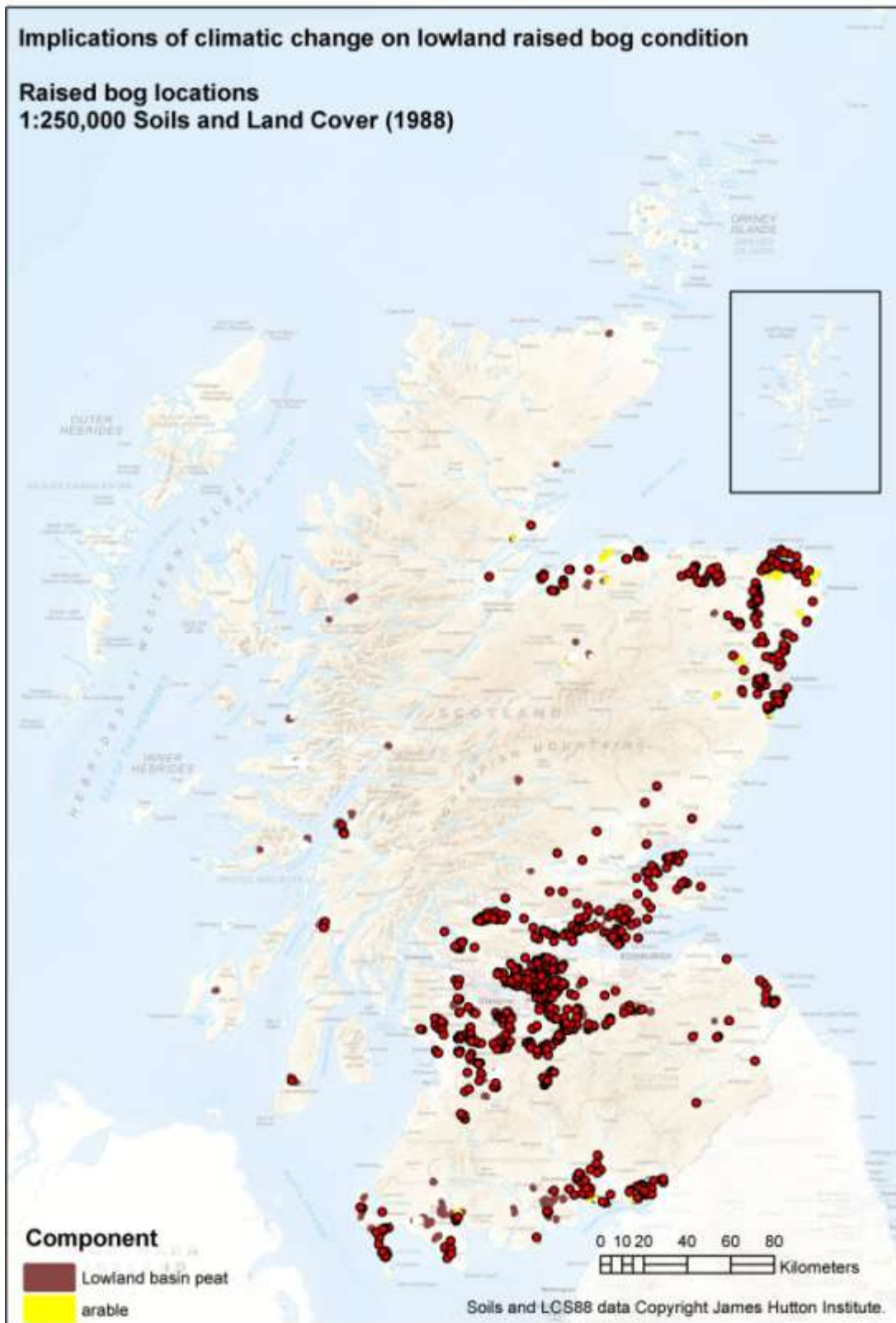
Annex Fig A2. Overlay of cutover raised bogs as per LCS88 with the LRBI locations, showing that some large complexes with potentially good quality vegetation cover were not included in the LRBI. Designated sites that are classified as blanket or intermediate (blanket) bog or for their upland assemblage habitat qualities have been masked (see main report).



Annex Fig A3. Overlay of raised bogs with woodland or plantation forestry cover as per LCS88 augmented with Forestry Commission Scotland data, with the LRBI locations showing that some large areas of forestry conversion were not included in the LRBI. Designated sites that are classified as blanket or intermediate (blanket) bog or for their upland assemblage habitat qualities have been masked (see main report).



Annex Fig A4. Overlay of raised bogs with grassland cover as per LCS88, with the LRBI locations showing that some large areas were not included in the LRBI. Designated sites that are classified as blanket or intermediate (blanket) bog or for their upland assemblage habitat qualities have been masked (see main report).



Annex Fig A5. Overlay of raised bogs converted to arable land as per LCS88, with the LRBI locations showing that some large areas, predominantly in the Grampian region, were not included in the LRBI. (LRBI in red to show contrast). Designated sites that are classified as blanket or intermediate (blanket) bog or for their upland assemblage habitat qualities have been masked (see main report).

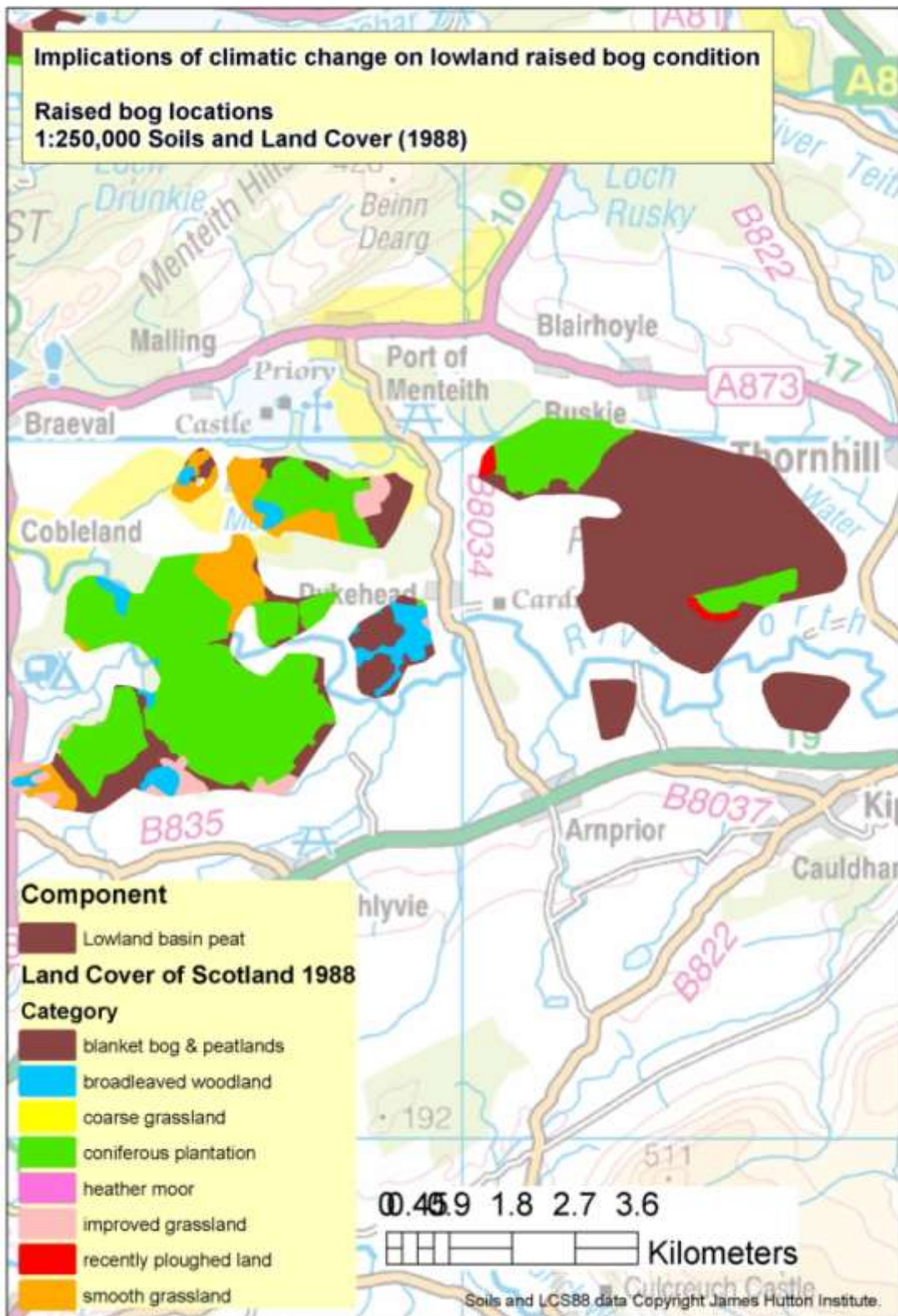
Annex Figs A6. Site-specific example of matches between the LCS88 categories of land cover and current land cover (GoogleEarth images) at the Flanders Moss case study



GoogleEarth overview of both major parts of Flanders Moss complex. The large plantation on West Flanders moss matches well with the extent in the LCS88.



In contrast, neither the large light coloured feature in the middle of East Flanders Moss nor the drained section north of the southern plantation is represented in the LCS88.



Land Cover map of the Flanders Moss complex.

