

Join us today!

You can help to support our vital work protecting Scotland's wildlife.

- Free entry to all our Visitor Centres and reserves
- Subscription to our Scottish Wildlife magazine
- Free copy of our Exploring Reserves guide
- Invitation to exclusive talks and events

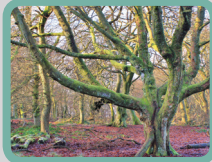
Visit scottishwildlifetrust.org.uk for more information or call 0131 312 7765.

You might also like to visit ...



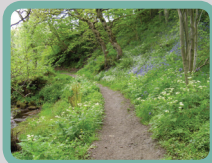
Cumbernauld Glen Wildlife Reserve

This ancient woodland is a haven for wildlife with stunning displays of seasonal colour. Good network of paths, 16th Century dovecote and mountain bike trail.



Forest Wood Wildlife Reserve

Sheltered, peaceful woodland with a range of habitats on Cumbernauld's southern edge. See cuckoos in spring and fungi in autumn. Footpath to Palacerigg Country Park.

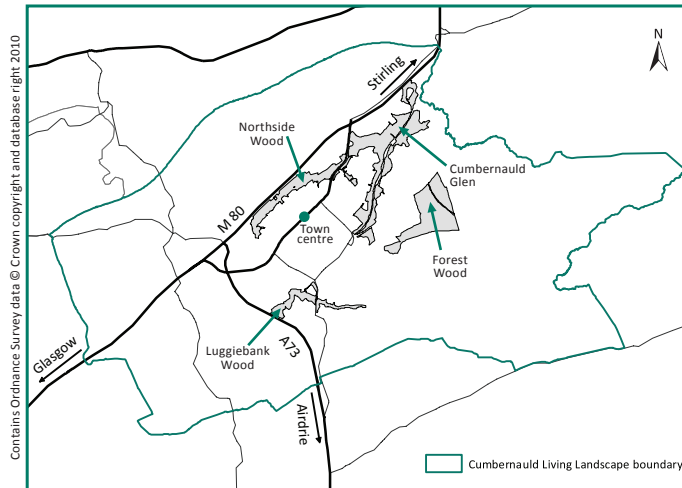


Luggiebank Wood Wildlife Reserve

Rich in varied biodiversity, visit this peaceful reserve for woodland, wildflowers, mammals and birds. An easy walk exists close to Luggie Water with trout jumping in Nov/Dec.

Cumbernauld Living Landscape

scottishwildlifetrust.org.uk/Cumbernauld



Contains Ordnance Survey data © Crown copyright and database right, 2010

Support for Northside Wood Wildlife Reserve has been gratefully received from the Landfill Communities Fund and North Lanarkshire Environmental Key Fund.



Cumbernauld Living Landscape is a partnership between the Scottish Wildlife Trust, North Lanarkshire Council, Forestry Commission Scotland and Central Scotland Green Network which aims to enhance, restore and reconnect green areas of the town.



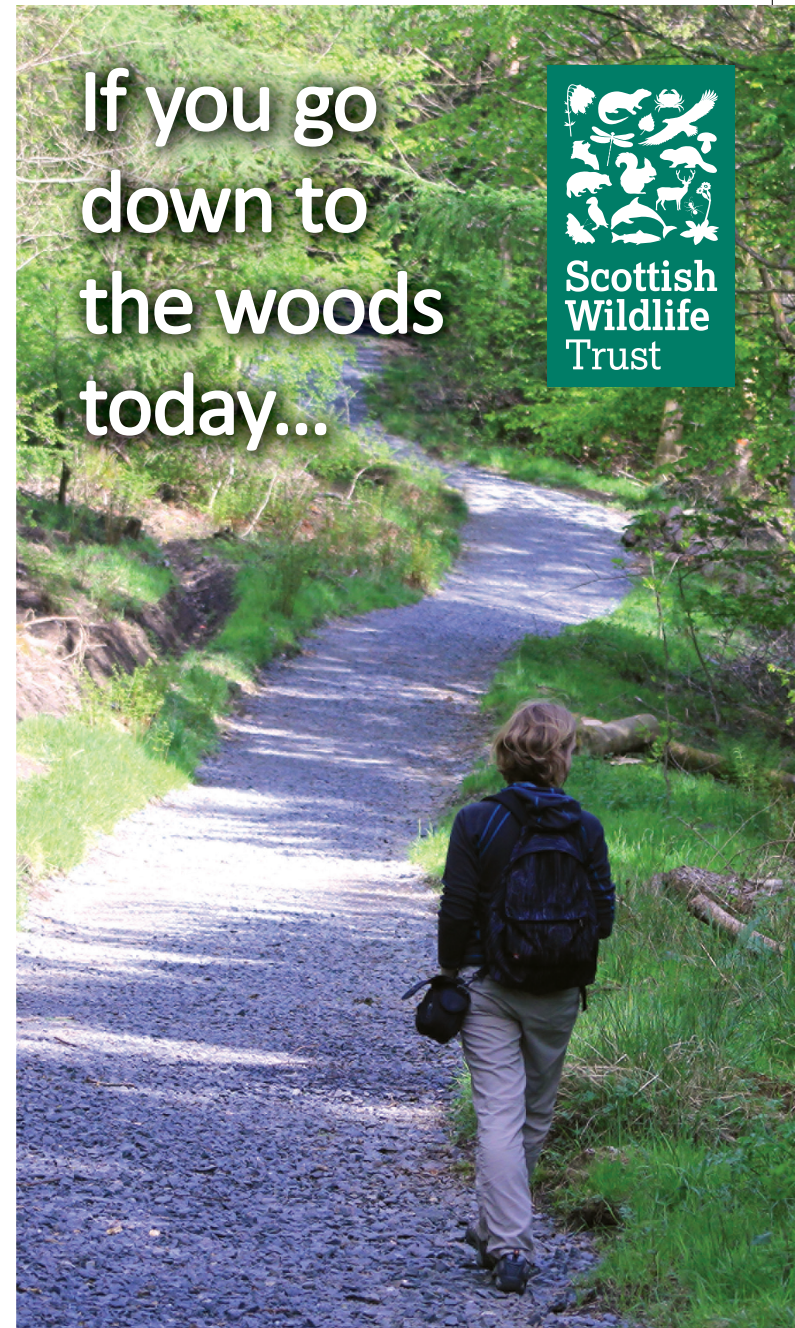
Scottish Wildlife Trust

scottishwildlifetrust.org.uk

Harbourside House 110 Commercial Street Edinburgh EH6 6NF
T 0131 312 7765 F 0131 312 8705 E enquiries@swt.org.uk

The Scottish Wildlife Trust is a company limited by guarantee, registered in Scotland (no. SC040247). It is also a Scottish registered charity (no SC005792). Cover image of Northside Wood reserve, robin, Cumbernauld Glen and Forest Wood reserves © Tracy Lambert. Volunteers © Graham Burns. Other photos © Scottish Wildlife Trust. Leaflet is printed on FSC accredited stock.

If you go down to the woods today...



Northside Wood
Wildlife Reserve, Seafar

Northside Wood

Wildlife Reserve

Visitor information

WHAT TO SEE?

Red fox, roe deer, common pipistrelle bat, buzzard, sparrowhawk and robin

WHEN TO SEE IT

- Spring for birds nesting
- Summer for flowers
- Autumn for leaf cover
- Winter for roe deer

TAKE CARE

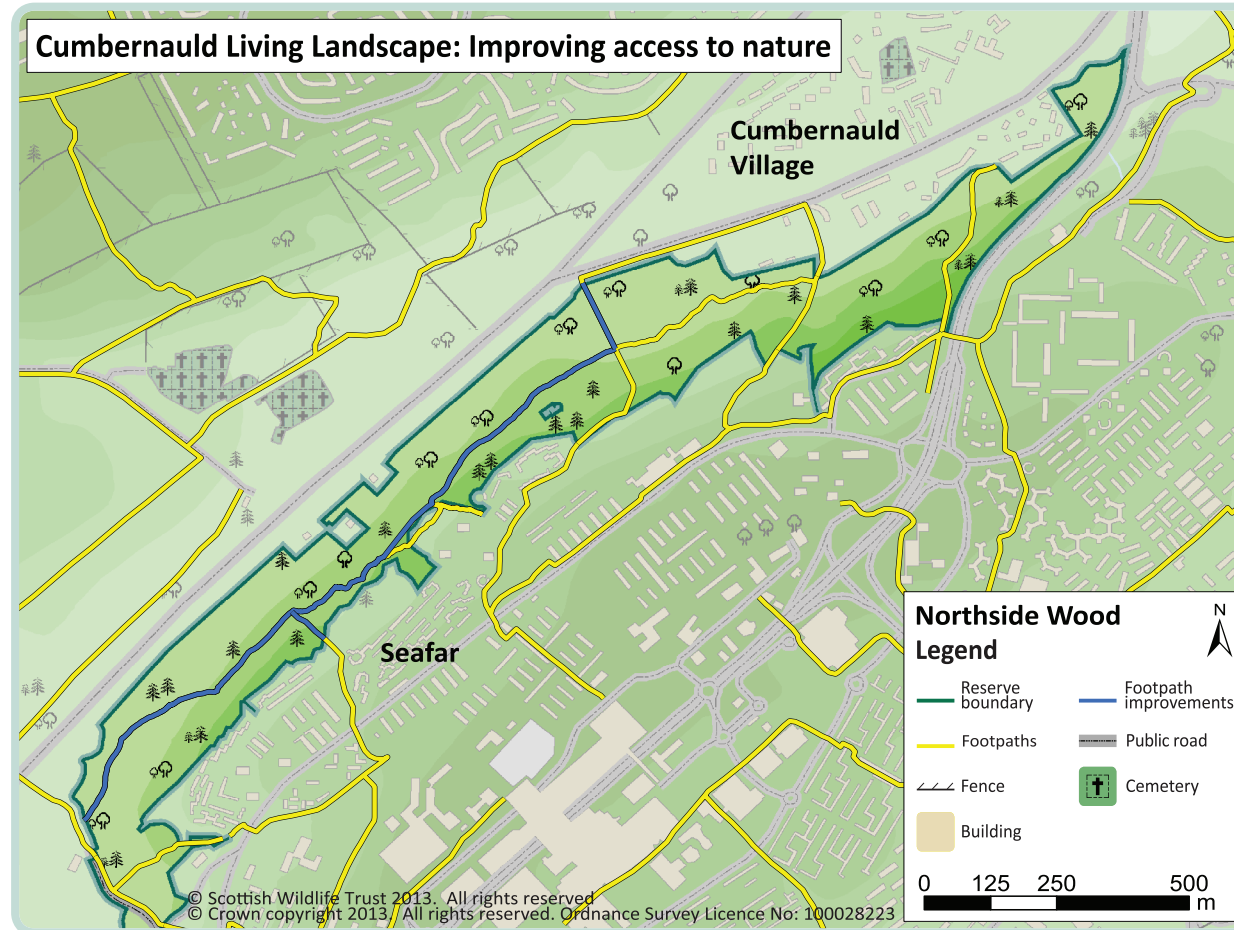
- Please avoid visiting the reserve during periods of heavy rain and strong winds
- Do report fallen trees or hanging branches to the Reserves Manager T: 01236 617114
- Footpaths can be slippery and muddy in winter
- Please take your litter home

DOG WALKERS

Please keep dogs under control to protect ground-nesting birds during the breeding season (April – July). Dispose of dog waste properly.



The Scottish Wildlife Trust, in partnership with North Lanarkshire Council, has been working hard to upgrade the path network throughout Northside Wood Wildlife Reserve. Grant funding was awarded by Lanarkshire Environmental Key Fund and work began in November 2012. The Scottish Wildlife Trust will continue to seek further funding for future upgrades to improve your enjoyment of the reserve.



A recovery plan for nature

Northside Wood Wildlife Reserve is at the core of Cumbernauld Living Landscape, an initiative which aims to enhance, restore and reconnect green areas of the town. Parks, woodlands and gardens are crucial to the well-being of both people and wildlife and we need to ensure they are at the heart of the town's future. These green spaces provide clean air, water and retreats from the busyness of everyday life. Without them, neither wildlife nor people can flourish.

Northside Wood Wildlife Reserve has lots to offer:

- Walking routes to Cumbernauld Village, the town centre and local schools
- A peaceful refuge where the outdoors is accessible and enjoyable
- A safe haven and corridor for wildlife with minimal disturbance in the wilder parts
- A new source of sustainable timber from well managed woodlands



INTERESTED IN VOLUNTEERING?

Please contact Reserves Project
Officer: T 01236 457050
E enquiries@swt.org.uk

