

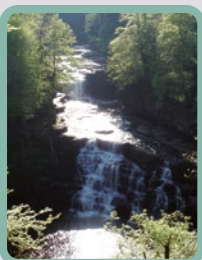
Join us today!

You can help to support our vital work protecting Scotland's wildlife.

- Free entry to all our visitor centres
- Subscription to *Scottish Wildlife* magazine
- A copy of the *Exploring Reserves* guide
- Invitation to exclusive talks and events

Visit scottishwildlifetrust.org.uk for more information or call 0131 312 7765.

You might also like to visit ...



Falls of Clyde Visitor Centre

Next to New Lanark World Heritage Site and part of Clyde Valley Woodlands National Nature Reserve. Visit for waterfalls, walks and wildlife. Look out for dippers, kingfishers and otters. Join the ranger for badger watching and other events.

A New Lanark ML11 9DB T 01555 665 262
E fallsofclde@scottishwildlifetrust.org.uk
X @TheFallsOfClyde F @TheFallsOfClyde



Loch of the Lowes Visitor Centre

Loch-side hides offer stunning views of ospreys rearing their chicks in spring, whilst beavers and waterfowl may be spotted all year round. The centre's woodland observation window gives close-up views of red squirrels and a wealth of other wildlife.

A Dunkeld PH8 0HH T 01350 727 337
E lochofthelowes@scottishwildlifetrust.org.uk
X @LochoftheLowes F @LochoftheLowes

For information on places to see near you, visit our website:

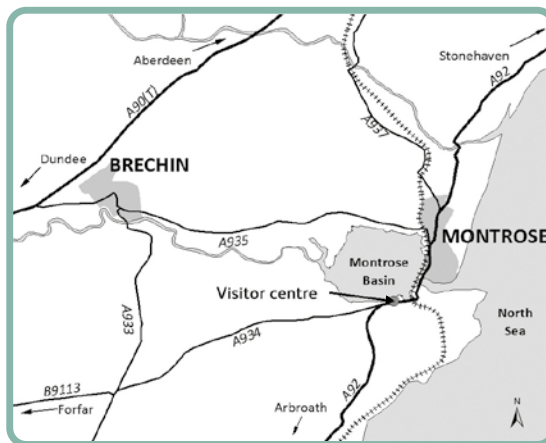
scottishwildlifetrust.org.uk/visit

Montrose Basin Visitor Centre

Rossie Braes Montrose Angus DD10 9TA

T 01674 676 336 E montrosebasin@scottishwildlifetrust.org.uk

X @MontroseBasin F @MontroseBasin



Contains OS data © Crown copyright and database right 2011

By car

On the A92 Montrose to Arbroath road just 1 mile (1.6 km) south of Montrose. Follow the brown signs to Montrose Basin Wildlife Centre. Free and convenient parking available.

By public transport

Frequent train services from Edinburgh, Glasgow, Aberdeen and all intermediate stations. Buses from Montrose town centre, ask the bus driver to let you off outside the visitor centre.

On foot

The visitor centre is just 30 minutes' walk from Montrose town centre. Please note the reserve walks do not begin from the visitor centre.

Admission*

For latest admission prices and opening times, please visit our website: scottishwildlifetrust.org.uk. Alternatively, call 01674 676 336 or check our social media pages.

Access to the reserve is free.

Special provision

The visitor centre is wheelchair friendly, including toilet facilities. An induction loop is fitted. Education activities are available for school groups. Ask at the visitor centre for more information.

*The admission payment includes an optional 10% donation which is to allow the Scottish Wildlife Trust to claim Gift Aid. Please advise our visitor centre staff if you do not wish to pay the additional donation.

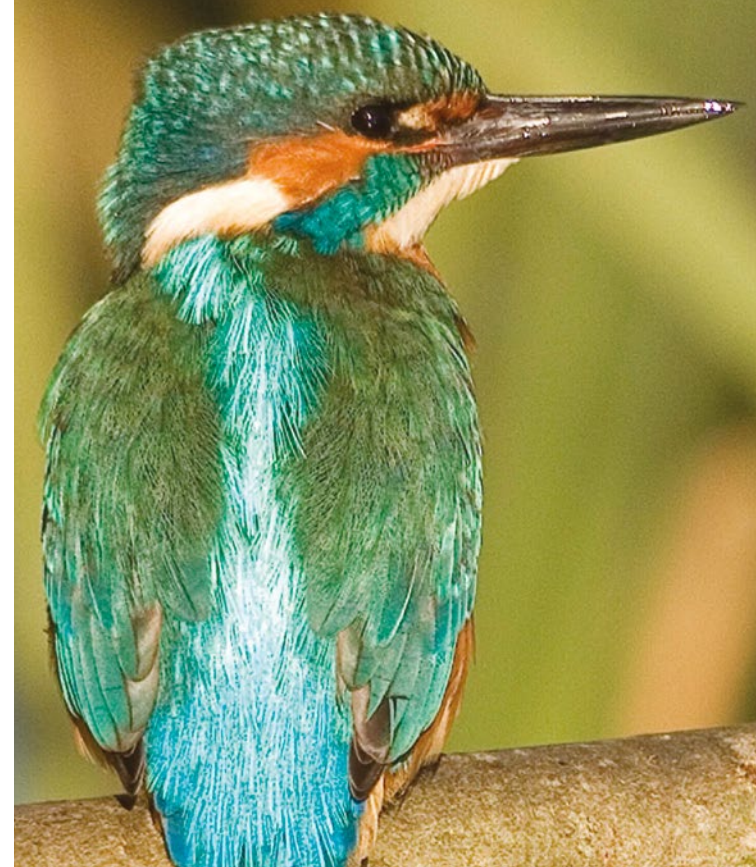


scottishwildlifetrust.org.uk

Harbourside House 110 Commercial Street Edinburgh EH6 6NF
T 0131 312 7765 E enquiries@scottishwildlifetrust.org.uk

The Scottish Wildlife Trust is a Scottish registered charity (no SC005792) and company limited by guarantee (no SC040247). Cover image of kingfisher © Darin Smith. Male eider duck © Scottish Wildlife Trust. Common seal © Charlie Phillips. Pink-footed goose © Ron Mitchell. Kingfisher © Ron Mitchell. Falls of Clyde © Ida Maspero. Loch of the Lowes osprey © A D Johnson. We care for the environment and only use paper from managed forests. Feb 2024

Come fly with me to Montrose!



Montrose Basin


Visitor Centre and Wildlife Reserve

Montrose Basin

Visitor Centre

Fun for all the family

 **POWERFUL TELESCOPES** and binoculars help you get closer to the wildlife outside the visitor centre.

 **FUN ACTIVITIES** including interactive quizzes, puzzles, games and crafts for all ages.

 **DIGITAL MICROSCOPES** at our nature table let you see tiny creatures in fine detail.

 **RELAX AND UNWIND** with a cup of Fairtrade tea or coffee, and enjoy panoramic views of the reserve.

 **WILDLIFE SHOP** packed with gifts for all occasions. Kids' toys, bird feed, Fairtrade items and much more!

Come fly with me to Montrose!

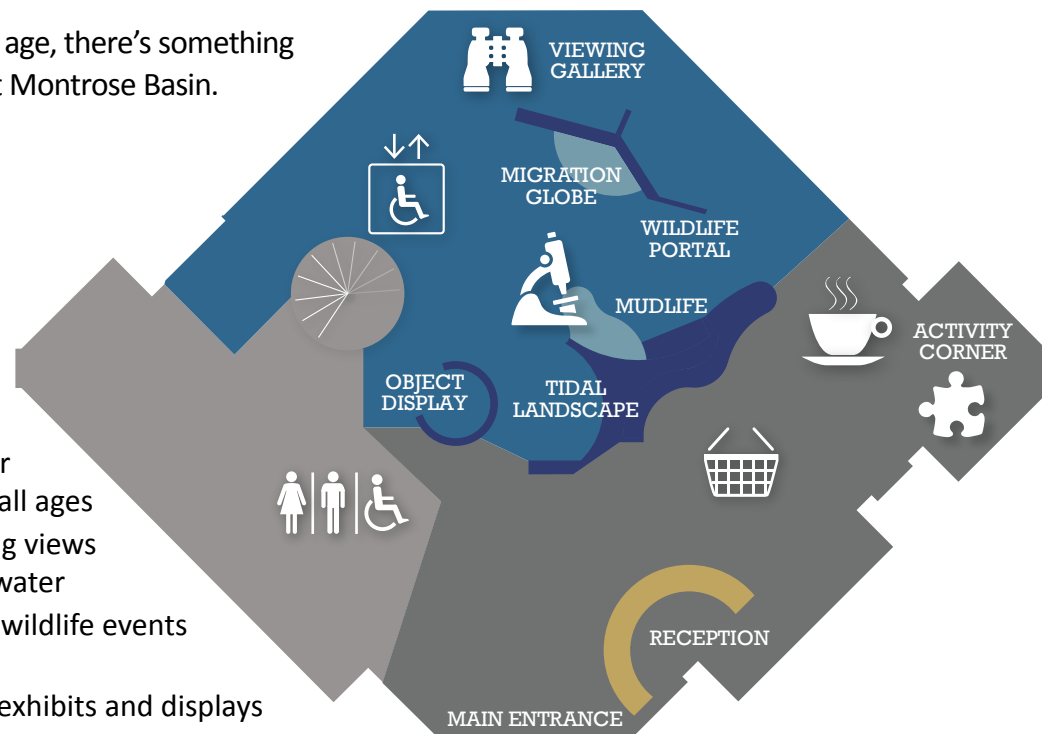
Have a wild day out at this four-star visitor centre and wildlife reserve

Just minutes from the centre of Montrose, this unique wildlife attraction combines the sights and sounds of birds such as kingfishers, ducks and geese, and mammals including seals and otters, with a host of child-friendly activities within the four-star visitor centre.

Whatever your age, there's something for everyone at Montrose Basin.

Good for:

- ✓ Games and activities for children of all ages
- ✓ Breathtaking views across the water
- ✓ Year-round wildlife events for all ages
- ✓ Interactive exhibits and displays
- ✓ Relaxing with a drink from our coffee shop
- ✓ A range of wildlife gifts in our shop



Eider duck

The fastest horizontal-flying bird in Britain. They line their nests with eiderdown to keep their eggs warm. Can be seen all year round.



Common seal

Can be seen all year round basking on the mudflats at low tide. They hunt shoals of salmon and sea trout that migrate through the estuary.



Pink-footed goose

Tens of thousands of these birds fly the 1,500km from Greenland and Iceland to Montrose each year. Best seen on our reserve between Oct and Feb.



Kingfisher

Best seen from the visitor centre between Sep and Mar. This brightly coloured bird needs to eat its own weight in fish every day.

