

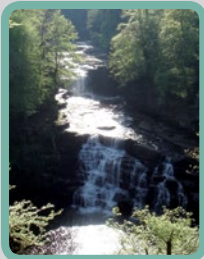
# Join us today!

You can help to support our vital work protecting Scotland's wildlife.

- Free entry to all our visitor centres and reserves
- Subscription to *Scottish Wildlife* magazine
- A copy of the *Exploring Reserves* guide
- Invitation to exclusive talks and events

Visit [scottishwildlifetrust.org.uk](http://scottishwildlifetrust.org.uk) for more information or call 0131 312 7765.

## You might also like to visit ...



### Falls of Clyde Visitor Centre

Next to New Lanark World Heritage Site and part of Clyde Valley Woodlands National Nature Reserve. Visit for waterfalls, walks and wildlife. Look out for dippers, kingfishers and otters. Join the ranger for badger watching and other events.

A New Lanark ML11 9DB T 01555 665 262  
E [fallsofclde@scottishwildlifetrust.org.uk](mailto:fallsofclde@scottishwildlifetrust.org.uk)  
T @TheFallsOfClyde F @TheFallsOfClyde



### Loch of the Lowes Visitor Centre

Each spring, ospreys arrive here from west Africa. The observation hide offers stunning views of the ospreys rearing their chicks. Interactive displays in the centre tell the story of Lowes and its wildlife – otters, red squirrels and much more.

A Dunkeld PH8 0HH T 01350 727 337  
E [lochofthelowes@scottishwildlifetrust.org.uk](mailto:lochofthelowes@scottishwildlifetrust.org.uk)  
T @LochoftheLowes F @LochoftheLowes

For information on places to see near you, visit our website:

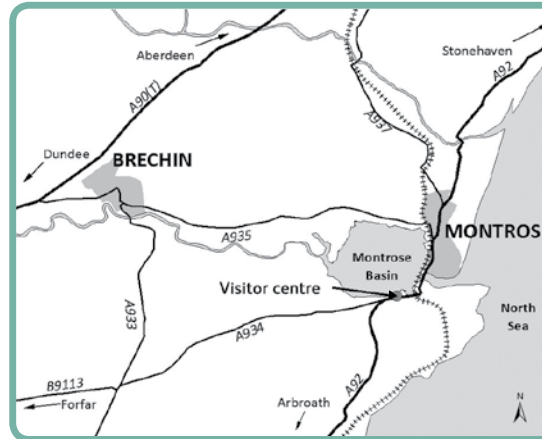
[scottishwildlifetrust.org.uk/visit](http://scottishwildlifetrust.org.uk/visit)

## Montrose Basin Visitor Centre

Rossie Braes Montrose Angus DD10 9TA

T 01674 676 336 E [montrosebasin@scottishwildlifetrust.org.uk](mailto:montrosebasin@scottishwildlifetrust.org.uk)

T @MontroseBasin F @MontroseBasin



Contains OS data © Crown copyright and database right 2011

### By car

On the A92 Montrose to Arbroath road just 1 mile (1.6 km) south of Montrose. Follow the brown signs to Montrose Basin Wildlife Centre. Free and convenient parking available.

### By train

Frequent services from Edinburgh, Glasgow, Aberdeen and all intermediate stations.

### By bus

From Montrose town centre, ask the bus driver to let you off outside the visitor centre.

### Special provision

The visitor centre is wheelchair-friendly, including toilet facilities. An induction loop is fitted. Education activities are available for school groups. Ask at the visitor centre for more information.

\* The admission payment includes an optional 10% donation which is to allow the Scottish Wildlife Trust to claim Gift Aid. Please advise our visitor centre staff if you do not wish to pay the additional donation.

### Opening times

Mid-Feb to 31 Oct: open daily from 10.30am–5pm

1 Nov to mid-Feb: open Fri–Mon from 10.30am–4pm

Closed on 25 & 26 Dec and 1 & 2 Jan

### Admission\*

Adults £4.00  
Concessions £3.00  
Family ticket £7.50

(2 adults, plus 2 children.  
Additional children 50p each.)  
Members FREE

10% discount for groups of 11 or more people.

Access to the reserve is free.



[scottishwildlifetrust.org.uk](http://scottishwildlifetrust.org.uk)

Harbourside House 110 Commercial Street Edinburgh EH6 6NF  
T 0131 312 7765 E [enquiries@scottishwildlifetrust.org.uk](mailto:enquiries@scottishwildlifetrust.org.uk)

The Scottish Wildlife Trust is a company limited by guarantee, registered in Scotland (no. SC040247). It is also a Scottish registered charity (no SC005792). Cover image of kingfisher © Darin Smith. Male eider duck © Niall Benvie. Common seal © Charlie Phillips. Pink-footed goose © Emilio Dicerbo. Common tern © Darin Smith. Falls of Clyde © Ida Maspero. Loch of the Lowes osprey © A D Johnson. We care for the environment and only use paper from managed forests. Jan 2018

# Come fly with me to Montrose!



## Montrose Basin


Visitor Centre and Wildlife Reserve

# Montrose Basin

## Visitor Centre

Fun for all the family

 **COOL TELESCOPES,** binoculars and live video footage help you get closer to the wildlife outside the centre.

 **FUN ACTIVITIES** including interactive quizzes, puzzles and games for all ages.

 **TINY CREATURES** can be seen with the help of high-powered microscopes and a wide variety of different slides.

 **RELAX AND UNWIND** with a cup of Fairtrade tea or coffee, and enjoy panoramic views of the reserve.

 **WILDLIFE SHOP** packed with gifts for all occasions. Kids' toys, bird feed, Fairtrade items and much more!

# Come fly with me to Montrose!

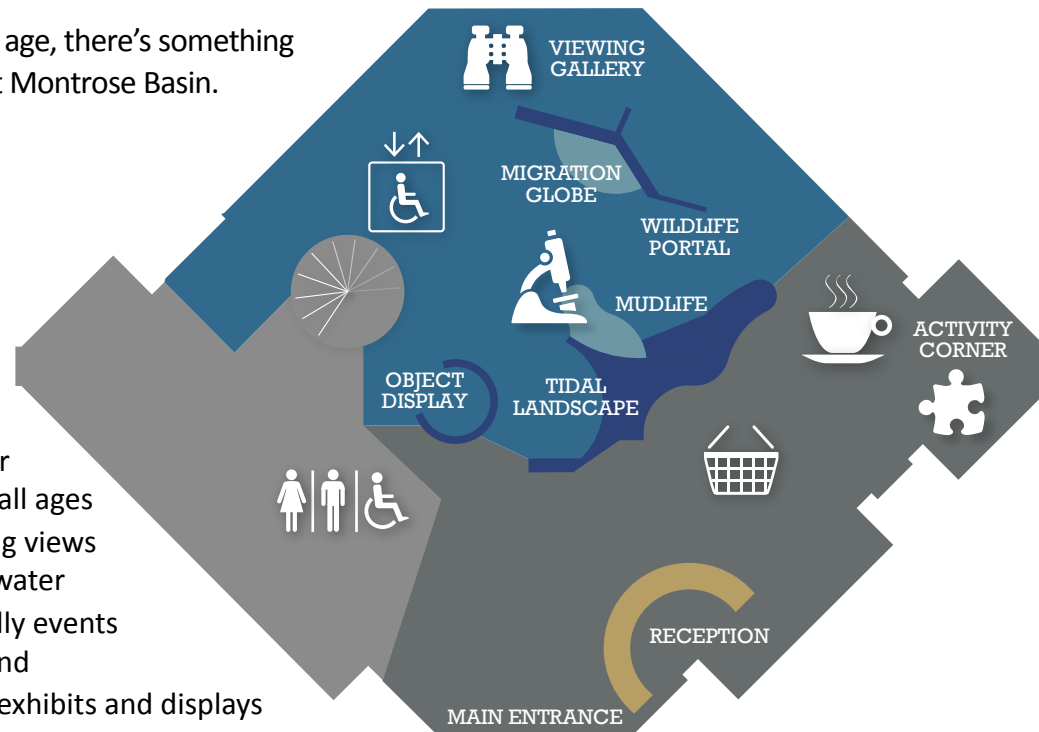
## Have a wild day out at this four-star visitor centre and wildlife reserve

Just minutes from the centre of Montrose, this unique wildlife attraction combines the sights and sounds of birds such as kingfishers, ducks and geese, and mammals including seals and otters, with a host of child-friendly activities within the four-star visitor centre.

Whatever your age, there's something for everyone at Montrose Basin.

### Good for:

- ✓ Games and activities for children of all ages
- ✓ Breathtaking views across the water
- ✓ Child-friendly events all year round
- ✓ Interactive exhibits and displays
- ✓ Relaxing in the visitor centre cafe
- ✓ Range of wildlife gifts in our shop



### Eider duck

The fastest horizontal-flying bird in Britain. They line their nests with eiderdown to keep their eggs warm. Can be seen all year round.



### Common seal

Can be seen all year round basking on the mudflats at low tide. They hunt shoals of salmon and sea trout that migrate through the estuary.



### Pink-footed goose

Tens of thousands of these birds fly the 1,500km from Greenland and Iceland to Montrose each year. Best seen on our reserve between Oct and Feb.



### Common tern

Drinks water while flying, gliding over the surface and dipping its bill several times into the salt water. Can be seen between Apr and Sep.

