



**FUTURESCAPES**  
space for nature, land for life

*Contributing to a National  
Ecological Network:*

## **RSPB Futurescapes and future collaborations**

**Stuart Housden**  
**Director, RSPB Scotland**





# RSPB Reserves 2012 Scotland

1:3,000,000

Scale on  
Ampaper

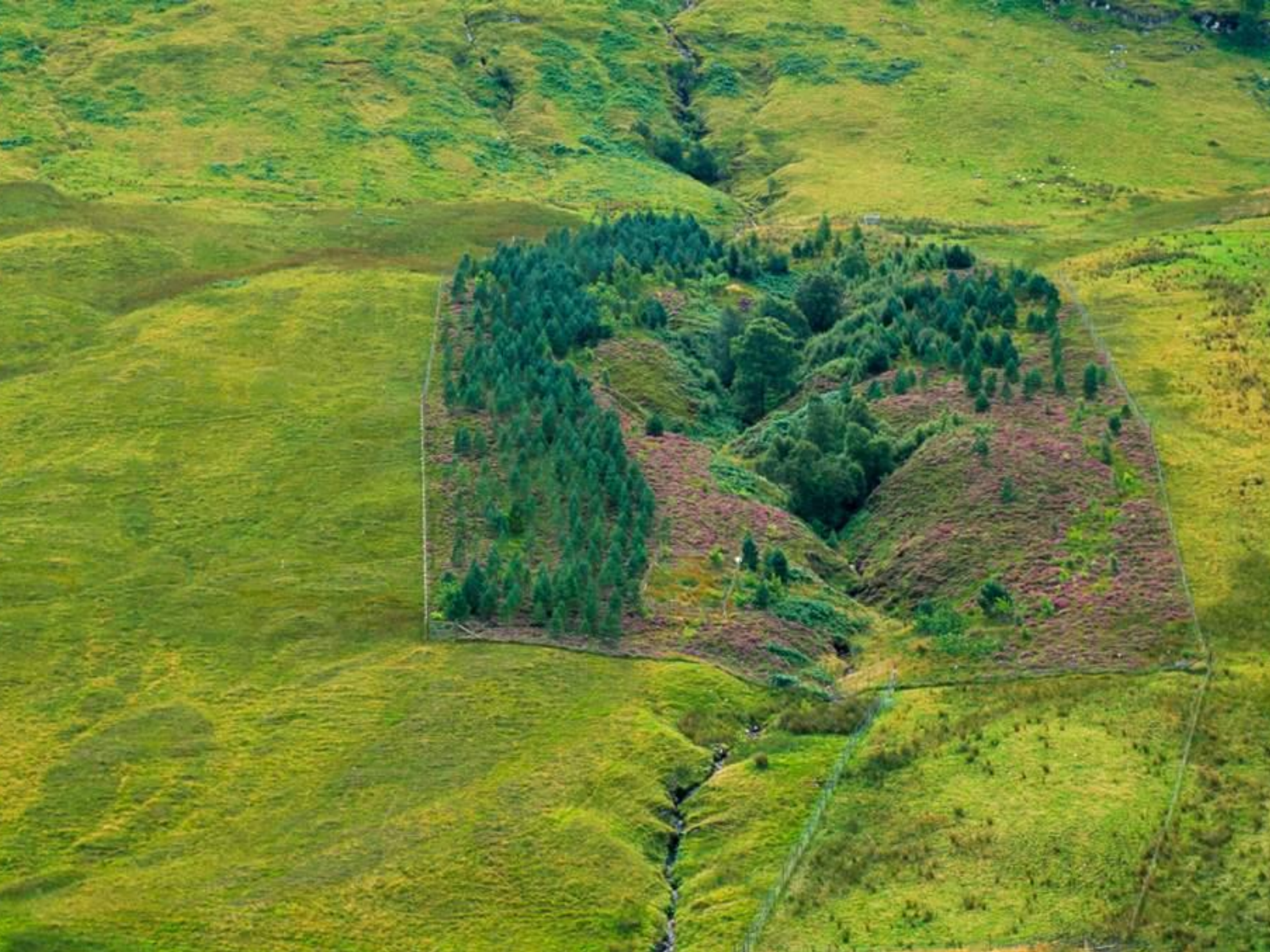


0 50 100 Km

Created by: Paul Dawson, Conservation Data Management Unit (09 June 2012)

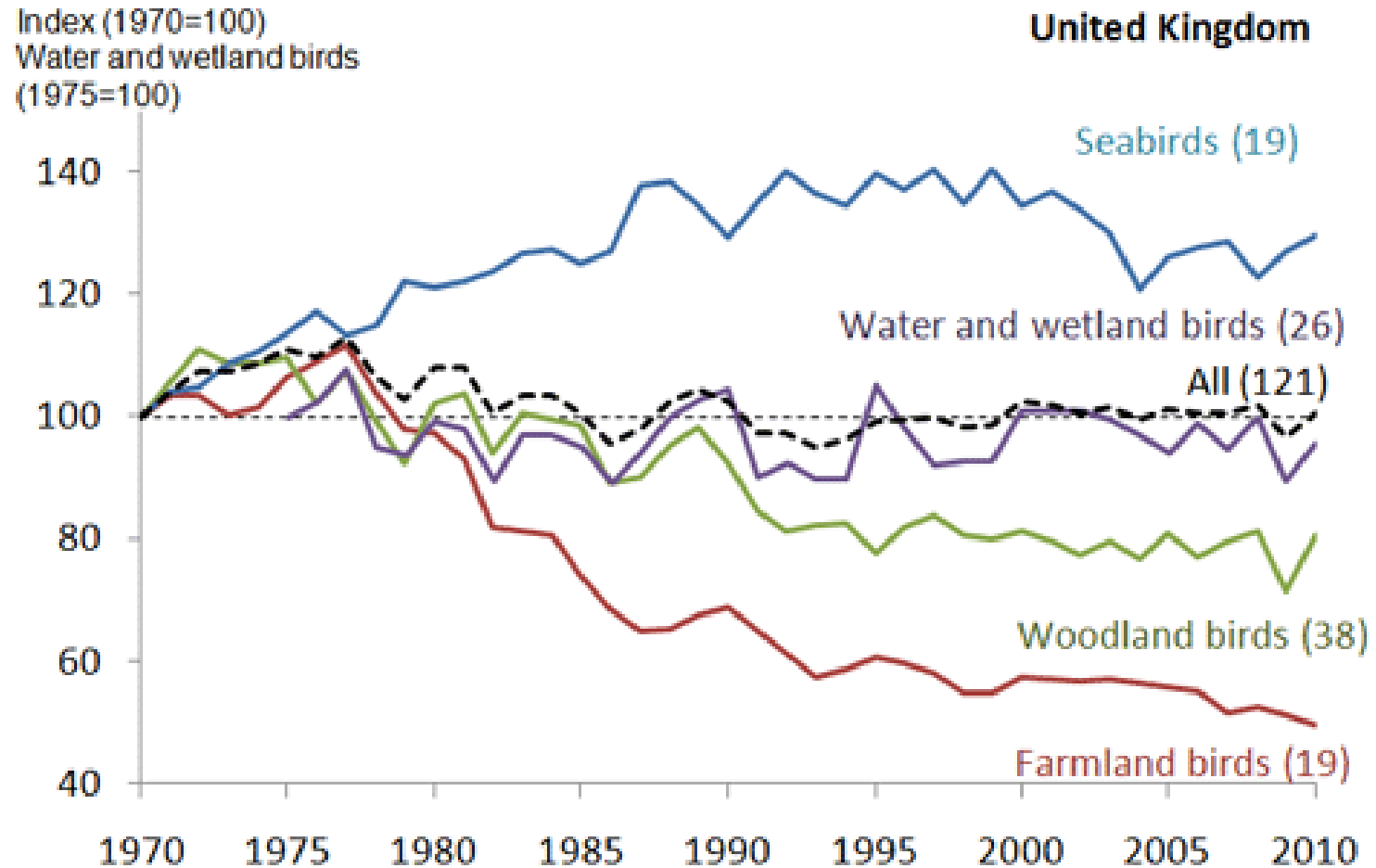






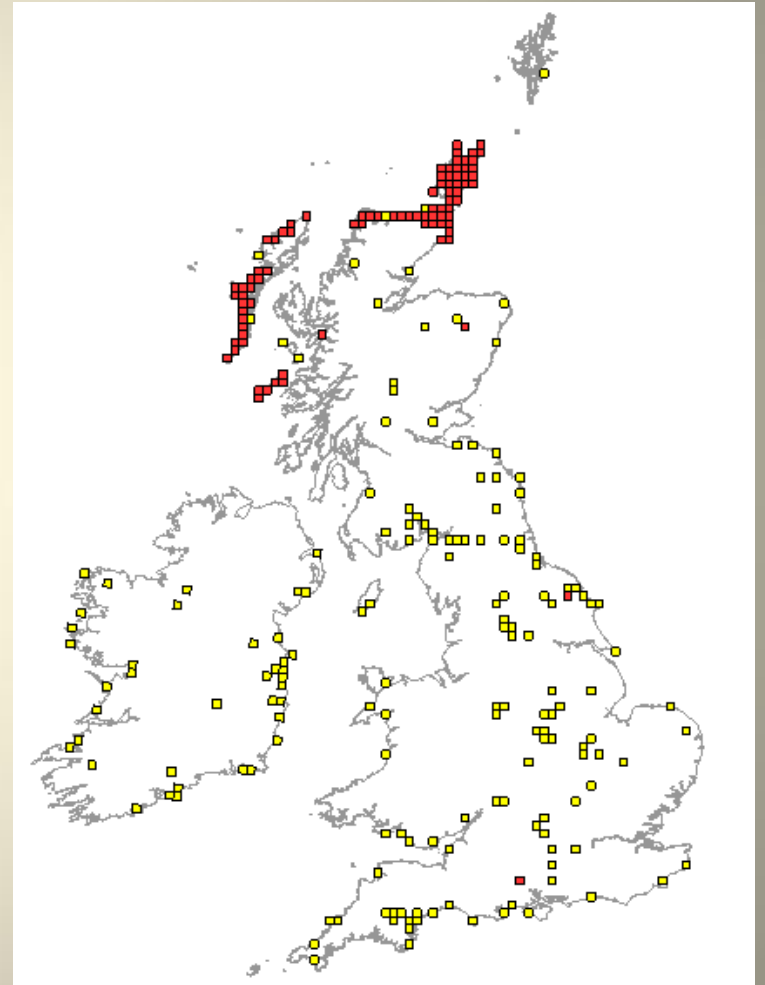


# Wild bird indicators



source: Defra, RSPB and BTO

Great Yellow Bumblebee records: 1900-1990  
(yellow) and 1990-2010 (red). Data from NBN







nature's  
voice

# FUTURESCAPES

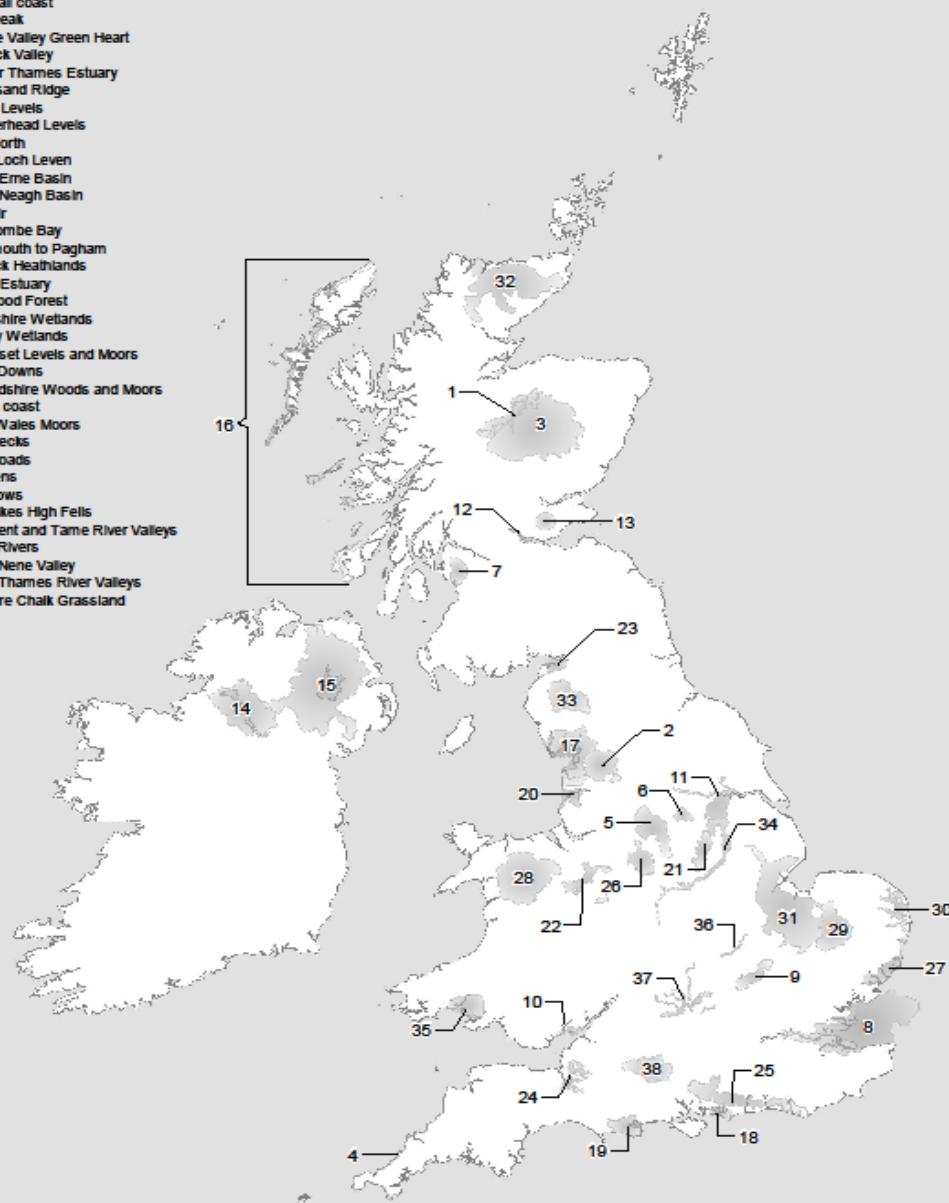
SPACE FOR NATURE,  
LAND FOR LIFE



UK

# Futurescape Locations 2012

- 1) Badenoch & Strathspey
- 2) Bowland
- 3) Cairngorms
- 4) Cornwall coast
- 5) Dark Peak
- 6) Deane Valley Green Heart
- 7) Garmock Valley
- 8) Greater Thames Estuary
- 9) Greensand Ridge
- 10) Gwent Levels
- 11) Humberhead Levels
- 12) Inner Forth
- 13) Living Loch Leven
- 14) Lough Erne Basin
- 15) Lough Neagh Basin
- 16) Machair
- 17) Morecombe Bay
- 18) Portsmouth to Pagham
- 19) Purbeck Heathlands
- 20) Ribble Estuary
- 21) Sherwood Forest
- 22) Shropshire Wetlands
- 23) Solway Wetlands
- 24) Somerset Levels and Moors
- 25) South Downs
- 26) Staffordshire Woods and Moors
- 27) Suffolk coast
- 28) North Wales Moors
- 29) The Brecks
- 30) The Broads
- 31) The Fens
- 32) The Flows
- 33) The Lakes High Fells
- 34) The Trent and Tame River Valleys
- 35) Three Rivers
- 36) Upper Nene Valley
- 37) Upper Thames River Valleys
- 38) Wiltshire Chalk Grassland

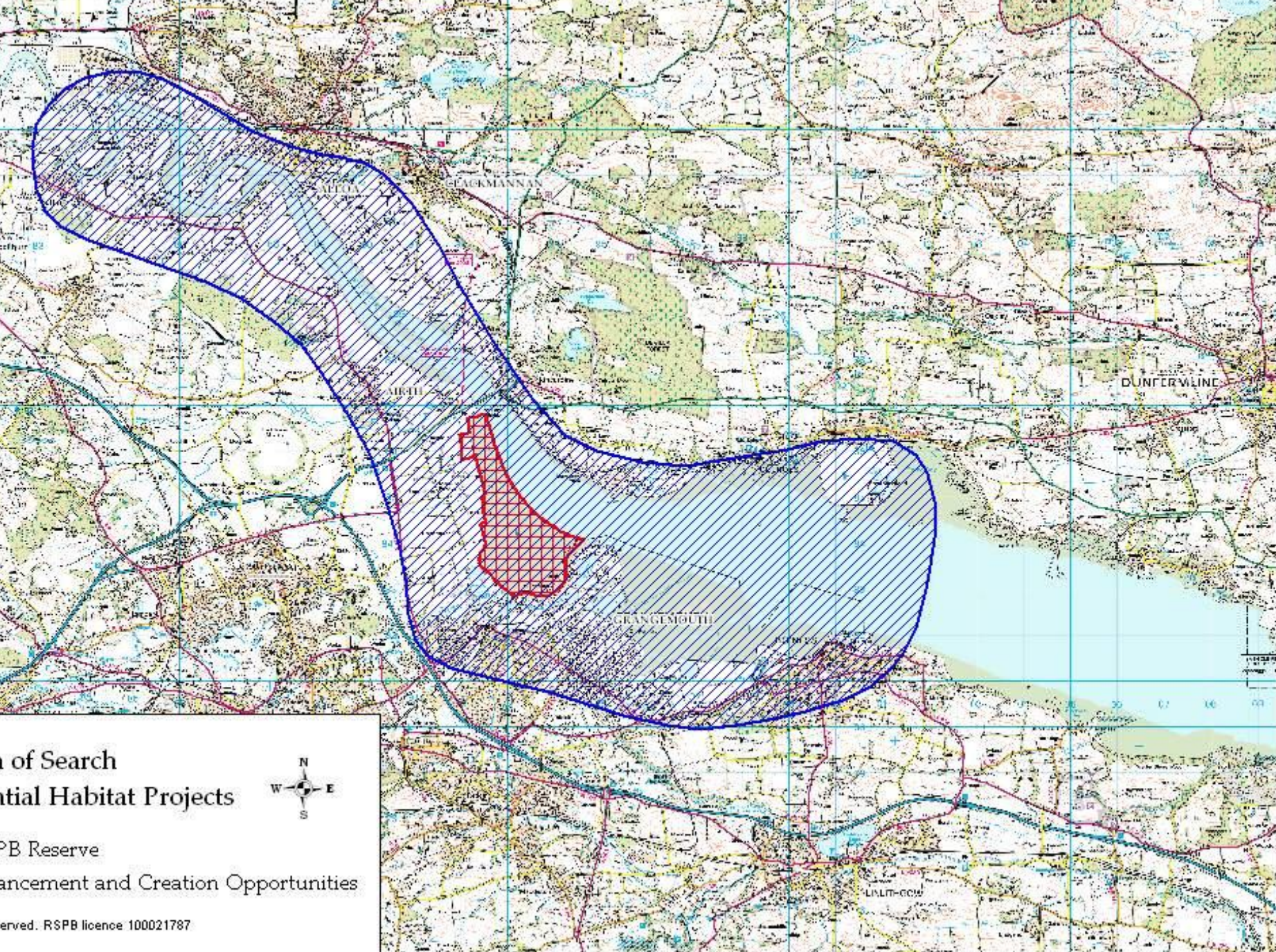




# The Inner Forth







# Area of Search Potential Habitat Projects

RSPB Reserve  
Enhancement and Creation Opportunities

Reserved. RSPB licence 100021787







## Conclusions

- Pressures on biodiversity mean that landscape-scale conservation is needed to complement protected areas and species programmes.
- RSPB Scotland and other NGOs are leading the delivery of such measures – but cannot do so alone.
- Partnership and collaboration will be vital, but also needs:-
  - Strategic vision and a supportive agency framework;
  - Funding – CAP/SRDP, lottery, EU resources, etc; and
  - Good local, delivery-focused staff.
  - Community and business buy in.



Saving

