

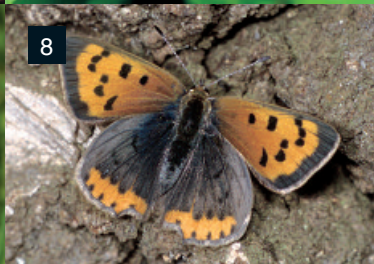


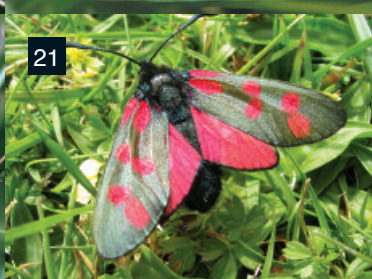
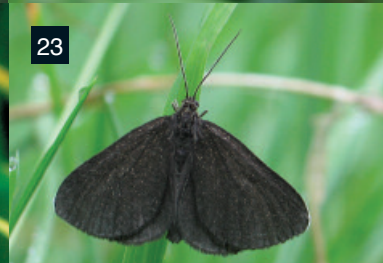
# Butterflies and day-flying moths of Glasgow



Orange-tip

This [identification guide](#) will help you identify all 20 species of butterflies, and 6 of the day-flying moths that occur in Glasgow. It also has a table so you can easily see which species are on the wing at a given time, and suggests some of the best and most easily accessible places in the Glasgow area for you to see butterflies and moths.





## WHITES AND YELLOWS

### 1 Clouded Yellow *Colias croceus*

#### Wing span 52 - 62mm

A migrant to the UK from the Continent, this butterfly is well known for its mass immigrations when they arrive in huge numbers in "Clouded Yellow years". Less common in Scotland, but in good years may be seen between May and September.

### 2 Large White *Pieris brassicae*

#### 58 - 63mm

Our largest white butterfly and a strong flier. The caterpillars feed on brassicas such as cabbage, broccoli and nasturtiums, and are therefore disliked by gardeners. Distinguishable from the Small White by its larger size, darker black wing tips extending further down the wing edge, and bolder spots. Flies May - September.

### 3 Small White *Pieris rapae*

#### 38 - 57mm

The caterpillars feed on brassicas, but they cause less damage than those of the Large White. Easily confused with the Green-veined White which is similar in size, but the upperside has dark tips to the forewings, and it lacks the green veins on the underside of the wing. It is one of the first butterflies to be seen in spring and flies all summer.

### 4 Green-veined White *Pieris napi*

#### 40 - 52mm

The most common of the whites, this species feeds on wild crucifers and is not a garden pest. The green veins on the underside of the wing distinguish this from other white butterflies and moths, but they can fade with wear and are less distinct in second generation butterflies.

One of the first butterflies of spring, it flies all summer.

### 5 Orange-tip

#### *Anthocharis cardamines*

#### 40 - 52mm

Males are unmistakable with their bright orange wing-tips, but females have no orange so could be confused with Small or Green-veined Whites. However, Orange-tips have more rounded wing tips and distinctive mottled green undersides that can also be seen faintly through the upperwing. Their distinctive orange eggs can be found on the caterpillars' food plants - crucifers such as cuckoo flower, garlic mustard, honesty and dame's violet. Flies mid-April to early June and very occasionally again in late August.

## HAIRSTREAKS, COPPERS AND BLUES

### 6 Green Hairstreak *Callophrys rubi*

#### 27 - 34mm

Despite the bright green appearance of this small butterfly, which always sits with its wings closed, it is often difficult to spot. It prefers warm, sheltered sites near woodland or along the scrubby edges of moorland where its caterpillars feed on blaeberry (bilberry). Only one site is currently known for this butterfly in Glasgow. The Green Hairstreak flies in May and early June.

### 7 Purple Hairstreak

#### *Neozephyrus quercus*

#### 31 - 40mm

A striking butterfly, but difficult to see, as it feeds on honeydew in the canopy of oak and other trees. Colonies usually favour a particular tree, and the butterflies are best looked for in late afternoon or early evening on warm days when they can be seen by scanning the tops of the oak trees with binoculars. Occasionally they fly down from the canopy to nectar on flowers. The caterpillars feed only on oak. Almost certainly under-recorded in the Glasgow area. Flies late July to mid-September.

### 8 Small Copper *Lycaena phlaeas*

#### 26 - 40mm

This dainty butterfly is a widespread species found in a range of habitats, including gardens. Its caterpillars feed on common and sheep's sorrel. It has two generations a year, in May/June and in August/September, but can be seen in July. It is rarely seen in large numbers.

### 9 Common Blue

#### *Polyommatus icarus*

#### 29 - 36mm

A widespread butterfly found in a variety of grassy habitats, almost anywhere that its caterpillar's foodplant, bird's-foot-trefoil, occurs. The beautiful and brightly-coloured males are very conspicuous, while the females are generally blue-brown with distinctive orange spots. In Scotland it usually has just one generation a year, the adults flying between June and September.

## 10 Holly Blue *Celastrina argiolus*

#### 26 - 34mm

This species has been moving north in recent years, and may soon arrive in Glasgow. Check its silvery-blue underwings for identification. Females have black wing-tips. Of the blue butterflies it is the one most likely to be seen in gardens, parks and woodland. It is not dependent on flower-rich grasslands, like the Common Blue. It has two generations per year, with adults flying in April/ May, and again in July/ August. In early spring the caterpillars feed on Holly, while in the summer Ivy is the main foodplant.

## VANESSIDS AND FRITILLARIES

### 11 Comma *Polygona c-album*

#### 50 - 64 mm

A very distinctive butterfly that has spread north in recent years, re-colonising Scotland. It is now found in the Glasgow area. The caterpillars feed on elm, hop and perhaps nettles. The adults may be seen between April and October.

### 12 Red Admiral *Vanessa atalanta*

#### 70 - 78mm

A familiar and distinctive garden butterfly, that migrates to the UK every year from southern Europe and North Africa. It can breed in Scotland but rarely survives our winters. The major influx starts in late May and is reinforced until August, with adults being seen until November in good years. The caterpillars feed on stinging nettles.

### 13 Painted Lady *Vanessa cardui*

#### 58 - 74mm

Another migrant, this species is unable to over-winter in any part of the UK and re-colonises each year from mainland Europe, sometimes in spectacular numbers. They can often be seen congregating in areas with thistles, which serve as both a foodplant for the caterpillars and a nectar source for the adults. The peak of immigration usually occurs in June, and adults can be seen until October or November.

#### 14 Small Tortoiseshell

*Aglais urticae*

45 - 62mm

This well-known butterfly can be seen in virtually any month of the year in almost any habitat. It is familiar in gardens and feeds on stinging nettles as a caterpillar. It over-winters as an adult and is one of the first butterflies to emerge in the spring. In autumn adults are regularly found in houses, sheds and outbuildings seeking hibernation sites.

#### 15 Peacock *Inachis io*

63 - 75mm

An unmistakable butterfly and a regular garden visitor, feeding on stinging nettles as a caterpillar. Its range has expanded northwards in Scotland in recent years following widespread immigration from the south in the mid 1990s. It is often one of the first butterflies to be seen in the spring, having over-wintered as an adult. The next generation flies from July to September, and is usually seen in much larger numbers.

#### 16 Small Pearl-bordered Fritillary

*Boloria selene*

35 - 44mm

This species occurs in damp, grassy habitats, woodland clearings and moorlands, but occurs at only a few sites in the Glasgow area. The caterpillars feed on marsh and dog violets. There is a Local Biodiversity Action Plan for this butterfly in Glasgow. It flies from early June to early August.

#### BROWNS

#### 17 Grayling *Hipparchia semele*

51 - 62mm

This is a rare species in the Glasgow area. It needs warm, sunny sites with bare ground and fine-leaved grasses, upon which the nocturnal caterpillars feed. Its natural habitats include coastal cliffs, dunes and heaths, but it has been able to colonise many so-called 'brownfield' sites such as old quarries and industrial sites, and also railway lines. The adult butterflies can be hard to see due to their superb camouflage. They are on the wing from late June to early September.

#### 18 Meadow Brown *Maniola jurtina*

40 - 60mm

The Meadow Brown can be seen in a variety of grassy habitats, often in large numbers. The caterpillars feed on a variety of grasses. Males tend to be darker than females, but the amount of orange on both is variable. A strong flier, on the wing from late June to early September.

#### 19 Ringlet *Aphantopus hyperantus*

42 - 52mm

The Ringlet has been expanding its range in central Scotland and is now a common species in Glasgow. It has a very dark, velvety appearance and a white 'fringe' to its wings when newly emerged. The "ringlets" on the under-wings vary in number and size and can be virtually absent. It flies, even in dull conditions and light rain, in June and August.

#### 20 Small Heath

*Coenonympha pamphilus*

33 - 37mm

An inconspicuous butterfly that flies only in sunny conditions and always keeps its wings closed at rest. It occurs on grasslands in dry, well-drained situations where the sward is short but sparse and where there are fine-leaved grasses upon which the caterpillar feeds. It has one generation from early June to the end of August.

#### DAY-FLYING MOTHS

The six moths shown are all conspicuous and attractive species that can be seen in the Glasgow area. They fly during the day and are sometimes mistaken for butterflies. There are probably well over 500 species of moth that could be seen in Glasgow - but most only fly at night.

#### 21 Six-spot Burnet

*Zygaena fillipendula*

25 - 40mm

This is a common and brilliantly coloured moth. The bright red and black colours of the adults mean 'birds beware' because the moth is packed with chemical defences in the form of cyanide! The caterpillars are also poisonous and they derive their chemical defences from their foodplant, bird's-foot trefoil. Flies from late June to August in sunny, grassy places.

#### 22 Cinnabar *Tyria jacobaea*

34 - 46mm

The adult Cinnabar has similar coloration to the unrelated Six-spot Burnet, and is also poisonous to birds. In this case the poison, again obtained by the caterpillars, is from common ragwort. The adults fly from mid-May to August in dry, grassy habitats. The caterpillars are also conspicuous, having orange and black stripes. This moth has become much rarer in recent years - but probably not due to a decline in ragwort!

#### 23 Chimney Sweeper

*Odezia atrata* 24 - 30mm

This striking little moth is sometimes mistaken for the Small Blue butterfly, which can also appear very dark. The Chimney Sweeper is entirely black/very dark brown, except for the white edges of the wing tips. The adults are on the wing between June and early August. The caterpillars feed on the flowers and seeds of pignut, and thus this moth is found in open woodlands and flower-rich grasslands.

#### 24 Mother Shipton

*Callistege mi* 26 - 32mm

This moth gets its strange name from the wing pattern which is reputed to resemble the old witch! The caterpillars can feed on grasses and various legumes, such as clover and bird's-foot trefoil. The adults are on the wing from early May through to early July, usually found in sunny habitats with flowery grasslands.

#### 25 Speckled Yellow

*Pseudopanthera macularia*

26 - 30mm

The caterpillars of this moth feed on wood sage, woundworts and dead-nettles, and the very distinctive adults are most often seen in open woodland or scrubby places. They generally fly up when disturbed, rather than being active day-fliers, and can be seen from mid May to late June.

#### 26 Red-necked Footman

*Atolmis rubricollis* 30 - 36mm

Another unmistakable species, the Red-necked Footman has been spreading quickly in Scotland in recent years. The caterpillars feed on lichens on trees, both in native woodland but especially in conifer plantations. The adults can be seen on sunny days in June and July at ground level, but spend most of their time in the canopy. They could at first be mistaken for caddis flies, but these never have red markings.

# Top sites to see butterflies and moths in Glasgow

Choose warm, sunny days to look for butterflies and day-flying moths, when they are more active. Always take a map. Many paths are uneven so wear footwear with good ankle support and for longer walks take warm, waterproof clothing as weather conditions can change quickly. A mobile phone, sun hat, snack and drink are good safety precautions. Let someone know where you have gone and what time you expect to be back. Remember to take a notebook and pen too, to record your butterfly and moth sightings!



Hogganfield Park



Garscadden Wood



Linn Park



Robroyston Park





Name	Some of the species present	How to get there	OS grid ref of car park and other location details
<b>Garscadden Wood Local Nature Reserve</b>	Meadow Brown, Ringlet, Purple Hairstreak, Large White, Small White, Green-veined White, Small Tortoiseshell, Peacock, Orange-tip	From Great Western Road (A82) and Duntocher Road (A810) to Drumchapel	NS 528720. Park on Drummore Road, west of Bankglen Road.
<b>Cathkin Braes</b>	Small Pearl-bordered Fritillary, Orange-tip, Ringlet, Small Heath, Peacock, Small Copper, Meadow Brown, Common Blue	Off Cathkin Road (B759) or Arden Craig Road, Castlemilk	NS 608584. Park along Arden Craig Road or Cathkin Road.
<b>Hogganfield Park Local Nature Reserve</b>	Orange-tip, Small Heath, Peacock, Small Copper, Meadow Brown, Common Blue, Comma, Ringlet, Small Tortoiseshell	From Cumbernauld Road (A80) or Avenue End Road (B7053)	NS 644673. There is a car park at Hogganfield Park, access from Cumbernauld Road.
<b>Linn Park Local Nature Reserve</b>	Small Tortoiseshell, Orange-tip, Peacock, Small Copper, Meadow Brown, Common Blue, Ringlet	Off Carmunnock Road (B766) on Simshill Road	NS 585595. Park at Golf Course car park.
<b>Robroyston Park Local Nature Reserve</b>	Orange-tip, Ringlet, Small Heath, Small Copper, Meadow Brown, Green-veined White, Common Blue, Six-spot Burnet	Off Robroyston Road (B765)	NS627684. Park in Quarrywood Road, Barmulloch.
<b>Darnley Mill</b>	Orange-tip, Small Copper, Common Blue, Meadow Brown, Small Heath, Ringlet, Chimney Sweeper, Six-spot Burnet	Off Nitshill Road or Corselet Road. From M77 junction 3	NS 529 594. No car parking on site, park in Waulkglen Road, Southpark Village.



# Glasgow is Buzzing with Wildlife!

**Glasgow is buzzing. It is full of life! There are over 6,000 species living side by side in our vibrant city, many of them invertebrates. Butterflies and moths are amongst our most attractive insects and play a part in pollinating plants. They are also excellent indicators of the health of the environment and provide food for many birds and other animals.**

A massive 97% of flower-rich grassland has been lost in the UK since World War Two - these areas were vital habitats for butterflies, bees and other bugs to live and feed in. As a result this has caused drastic declines in our pollinators and other species.

In Glasgow we are working to transform mown grassland into colourful and wildlife-rich wildflower meadows. These will provide space to live and thrive for a whole range of animals and plants, and allow people to walk and enjoy nature in the City.

Look out for the range of beautiful butterflies depicted in this leaflet and send in your records to help monitor and protect our wilder areas of the City.

Butterfly Conservation is working with Buglife and Glasgow City Council to enhance Glasgow's green spaces for invertebrates - let's keep Glasgow Buzzing!

## Glasgow Local Biodiversity Action Plan (LBAP)

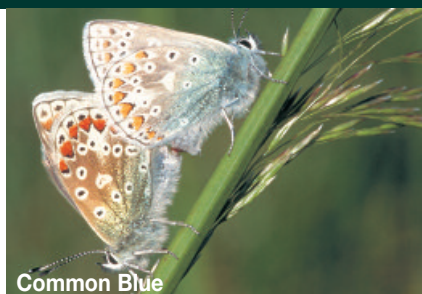
LBAPs are an excellent way of co-ordinating action to conserve wildlife at the local level. Local action cannot take place without the enthusiasm and interest of local people. It also depends on partnerships between local communities, landowners, businesses, a range of voluntary and public organisations, and the local Council.

Glasgow's LBAP was launched in 2001 and much has been achieved. For more information go to:

**[www.glasgow.gov.uk/biodiversity](http://www.glasgow.gov.uk/biodiversity)** or contact the Biodiversity Officers at Glasgow City Council, Land and Environmental Services, 231 George St, Glasgow, G1 1RX. Tel: 0141 287 5665/7026.

## Buglife - The Invertebrate Conservation Trust

is the only organisation in Europe devoted to the conservation of all invertebrates, and we are passionately committed to saving Britain's rarest little animals, everything from bees to beetles, and jumping spiders to jellyfish.



Common Blue



Orange-tip



Hogganfield Park Meadow

## Butterfly Conservation Scotland

Butterfly Conservation is a UK charity, with 19,000 members (over 1200 in Scotland). Butterfly Conservation's work in Scotland is overseen by a Scottish Committee, and we work closely with Scottish Natural Heritage, the Scottish Executive, local communities and conservation partners to safeguard Scotland's butterflies and moths. Much of our work relates to the UK Biodiversity Action Plan and the Scottish Biodiversity Strategy

### Butterfly Conservation Scotland

- Advises landowners on managing habitats for butterflies and moths
- Carries out surveys and monitoring on our most threatened species
- Trains volunteers to enable them to take action for butterflies and moths
- Makes recommendations to the Scottish Executive on its environmental policies
- Encourages everyone to cherish their butterflies and moths - in their gardens, parks, crofts, farms and around industrial sites

## Join us!

You can support us in this vital work by joining Butterfly Conservation. With an annual membership you will receive an interesting and informative welcome pack, a colourful magazine *Butterfly* three times a year and membership of your local branch of Butterfly Conservation.

Our local branches run public butterfly and moth events throughout the year.

To find out what is going on in our area, go to: [www.southwestscotland-butterflies.org.uk](http://www.southwestscotland-butterflies.org.uk)



# Butterfly Conservation Scotland

Saving butterflies, moths and our environment

### Scotland Office

Butterfly Conservation Scotland Balallan House 24 Allan Park Stirling FK8 2QG

Email: [scotland@butterfly-conservation.org](mailto:scotland@butterfly-conservation.org) Tel: 01786 447753

[www.butterfly-conservation.org](http://www.butterfly-conservation.org)

Photographs by:

Jim Asher, Alan Barnes, Glasgow City Council, Peter Eeles, Owen Figgis, Paul Kirkland, Eric McCabe, Mark Parsons, Tom Prescott, Paul Pugh, Julie Stoneman, Martin Warren and David Whitaker.

Butterfly Conservation is a registered charity and non-profit making company, limited by guarantee.

Registered in England (2206468). Registered Office: Manor Yard, East Lulworth, Wareham, Dorset, BH20 5QP.

Charity registered in England & Wales (254937) and in Scotland (SCO39268).